



Tumble Dryer Instruction Manual

TDF1100









Contact Caple on 0117 938 7420 for spare parts or www.caple.co.uk

CONTENTS

Warnings	3
Environmental Protection	15
Technical Fiche	15
Warranty	15
Overview of Tumble Dryer	16
Installation	17
Installation Details	19
Control Panel Overview	20
Using Your Tumble Dryer	21
Operating Your Machine	24
Drying Programmes	26
Additional Functions	29
Cleaning and Maintenance	32
Machine Sound	36
Troubleshooting	37
Automatic Fault Warnings and What to Do	39
Technical Specification	40
Caple Contact Details	42

Keep these instructions for use with the appliance. If the appliance should be sold or passed on to others, make sure that the instructions are passed on with it. We thank you for taking note of these suggestions before installing and using the appliance. They have been written for your personal safety and the safety of others.

ICON	TYPE	MEANING
	WARNING	Risk of serious injury or death
	RISK OF ELECTRIC SHOCK	Dangerous voltage
	FIRE	Risk of fire
	ATTENTION	Risk of injury or material damage
	IMPORTANT / NOTE	Information on correct operation of the system
		Hot Surface

SAFETY INSTRUCTIONS

- This appliance can be used by children aged from 8 years and above and persons with reduced physical, sensory or mental capabilities or lack of experience and knowledge if they have been given supervision or instruction concerning use of the appliance in a safe way and understand the hazards involved. Children must not play with the appliance. Cleaning and user maintenance must not be made by children without supervision.
- Children of less than 3 years should be kept away unless continuously supervised.
- This tumble dryer is intended only for household and indoor use. The warranty will be void in case of commercial use.
- Use this product only for laundry with a label that indicates it is suitable for drying.
- The manufacturer will not accept responsibility for damages resulting from incorrect use or transport.
- Installation and repair of the machine should only be made by an authorised repair agent. The manufacturer cannot be held responsible for damages resulting from un-authorized repairs.

WARNING:

- Never spray or pour water onto the dryer to wash it. There is risk of electric shock.
- Leave at least 3cm of space between the side and rear walls of the product and above if you plan on placing your appliance under a worktop.
 - Assembly/disassembly for under-counter installation [if necessary] must be done by an authorised service agent.
 - Before installation, check the product for visible damage. Never install or operate a damaged product.
 - Keep pets away from the dryer.
 - Fabric softeners or similar products should be used in accordance with the manufacturers instructions.
 - Remove all objects from pockets such as lighters and matches.
 - The appliance must not be installed behind a lockable door, a sliding door or a door with a hinge on the opposite side to that of the tumble dryer, if it prevents the door from being fully opened.

! WARNING:

In the appliance enclosure or in the built-in structure, keep ventilation openings clear of obstruction.

- Before contacting the local Authorised Service Provider for the installation of the dryer, check the information in the user manual to make sure that the electrical installation and water outlet is suitable. If they are not, call a qualified electrician and a plumber to have the necessary adjustments made.
- It is the customer's responsibility to prepare the dryer's installation place, as well as the electricity and waste water installation. Before installation, check the dryer for damage. If damaged, do not have it installed. Damaged products may endanger your health.
- Install the dryer on a stable and flat surface.
- Run the dryer in a dust-free environment where the air ventilation is good.
- **Do not block the ventilation grills** found on the plinth of the tumble dryer.
- Once the dryer has been installed, the connections must remain stable. When installing the dryer, make sure that the rear surface is not leaning on anything [e.g. tap, socket].
- The operating temperature of the dryer is +5°C to +35°C. If operated out of this temperature range, the performance of the dryer will be affected negatively and the product will be damaged.

- Be careful when carrying the product since it is heavy. Always wear safety gloves.
- The rear surface of the product should be placed against the wall.
- When the product is placed on a stable surface, use a water level to check if it is fully stable. If not, adjust the feet until it becomes steady. Repeat this process every time you relocate the product.
- Do not place the dryer onto the power cable.

This section contains safety instructions that will help protect you from risk of personal injury or property damage. Failure to follow these instructions will void any warranty.

ELECTRICAL SAFETY

- The appliance must not be supplied through an external switching device, such as a timer, or connected to a circuit that is regularly switched on and off by a utility.
- Do not touch the power plug with wet hands. Always pull the plug to unplug the product, otherwise, there will be risk of an electric shock.
- Connect the dryer to a grounded socket with fuse protection. The earth connection must be installed by a qualified electrician. Our company cannot be held responsible for damages/losses resulting from using the dryer without an earth connection as required by local regulations.

- The voltage and the allowable fuse protection are indicated on the **Rating Label** [located on appliance door porthole].
- Voltage and frequency values indicated on the type plate must be equal to the mains voltage and frequency value in your house.
- Unplug the dryer when it is not used for an extended period, and before installation, maintenance, cleaning and repair, otherwise, the dryer may get damaged.
- The plug socket must be freely accessible at all times after installation.



To avoid the risk of fire or electric shock, do not use extension cords, multi sockets or adapters to connect the dryer to mains power.

CHILDREN'S SAFETY

- This appliance is not intended for use by people [including children] with reduced physical, sensory or mental capabilities, or lack of experience and knowledge, unless they have been given supervision or instruction concerning use of the appliance by a person responsible for their safety.
- This appliance can be used by children aged from 8 years and above, and persons with reduced physical, sensory or mental capabilities or lack of experience and knowledge if they have been given supervision or instruction concerning use of the appliance in a safe

way and understand the hazards involved. Children must not play with the appliance. Cleaning and user maintenance must not be made by children without supervision.

- Do not leave children unattended near the machine.
- Children might lock themselves in the machine resulting in risk of death.
- Do not allow children to touch the glass door during operation. The surface becomes extremely hot and may cause skin damage.
- Keep packaging material away from children.
- Poisoning and irritation may occur if detergent and cleaning materials are consumed or come into contact with the skin and eyes.
- Keep cleaning materials out of the reach of children. Electrical products are dangerous for children.
- Keep children away from the product while it is running.
- To prevent children from interrupting the dryer cycle, you can use the child lock to avoid any changes in the running programme.
- Do not allow children to sit/climb on or climb inside the product.

PRODUCT SAFETY



Due to risk of fire, the following laundry items and products should NEVER be dried in the dryer:

- Do not dry unwashed items in the tumble dryer.
- Items that have been soiled with substances such as cooking oil, acetone, alcohol, petrol, kerosene, spot removers, turpentine, waxes and wax removers should be washed in hot water with an extra amount of detergent before being dried in the tumble dryer.
- Cleaning cloths and mats that have residues of flammable cleaning agents or acetone, gas, petrol, stain remover, turpentine, candle, wax, wax remover or chemicals.
- Laundry that has residues of hair sprays, nail polish remover and similar substances.
- Laundry on which industrial chemicals have been used for cleaning [such as chemical cleaning].
- Laundry that has any kind of foam, sponge, rubber or rubber-like parts or accessories. These include latex foam sponge, shower caps, waterproof fabrics, fitted clothes, and foam pillows.
- Items with filling and damaged [parts or jackets]. Foam protruding from these items might catch fire during the drying process.
- Operating the dryer in environments that contain flour or coal dust may cause explosion.



ATTENTION: Underwear that contains metal reinforcements should not be put in the dryer. The dryer may be damaged if metal reinforcements come loose and break off during drying.



FIRE:R290

Risk of fire and damage

This product contains environmentally friendly but flammable R290 gas. Keep open flames and fire sources away from the product.


CORRECT USE




ATTENTION: Never stop a tumble dryer before the end of the drying cycle unless all items are quickly removed and spread out so that the heat is dissipated.



ATTENTION: Make sure that pets do not enter the dryer. Check the inside of the dryer before using it.

 **ATTENTION:** Super heating of clothes inside the dryer can occur if you cancel the programme or in the event of a power failure whilst the dryer is running. This concentration of heat can cause self-combustion so always activate the Refresh programme to cool down or quickly remove all laundry from the dryer in order to hang them up and dissipate the heat.

- Use the dryer only for household drying and to dry fabrics with a label that indicates they are suitable for drying. All other uses are out of the scope of intended use and are prohibited.
- The warranty will be void in case of any commercial use.
- This appliance is designed to be used inside domestic residences only, and should be placed on a straight and stable surface.
- Do not lean against or sit on the door of the dryer. The dryer may tip over.
- To maintain a temperature that will not harm the laundry [e.g. to prevent the laundry from catching fire], a cooling process starts after the heating process. After this, the programme ends. At the end of the programme, always remove the laundry promptly.


 **ATTENTION:** Never use the dryer without a lint filter or with a damaged lint filter.

- Lint filters must be cleaned **after each use** as indicated in '**Cleaning the Lint Filter**'.
- Lint filters must be dried after wet cleaning. Wet filters might cause malfunction during the drying process.
- Lint accumulation must not be allowed around the tumble dryer [not applicable for appliances intended to be vented to the exterior of the building]

IMPORTANT: The clearance between the dryer and the floor should not be reduced with objects such as carpets, wood or panel, otherwise, sufficient air intake cannot be ensured for the machine.

- Do not install the dryer in rooms where there is risk of freezing. Freezing temperatures negatively affect the dryer's performance. Condensed water that freezes in the pump and hose may cause damage.

INSTALLING ON TOP OF A WASHING MACHINE

 **ATTENTION:** A washing machine cannot be placed on the dryer. Pay attention to the warnings below when installing the dryer on a washing machine.



ATTENTION: The dryer can only be placed on a washing machine that has the same capacity and above.

- To use the dryer on the washing machine, a fixing part must be used between the two products. The fixing part must be attached by an Authorised Service Provider.
- When the dryer is placed on the washing machine, the total weight of these products may reach almost 150 kilograms [when loaded]. Place the products on a solid floor that has a load bearing capacity.

In order to put the tumble dryer onto the washing machine, a special stacking kit is required as an optional extra. The assembly instructions will be supplied with the stacking kit. See 'STACKING YOUR APPLIANCE' for more information.



ENVIRONMENTAL PROTECTION

Waste electrical products should not be disposed of with household waste. Please recycle where facilities exist. Check with your Local Authority or retailer for recycling advice. This appliance is marked according to the European Directive on Waste Electrical and Electronic Equipment [WEEE].

By ensuring this product is disposed of correctly, you will help prevent potential negative consequences for the environment and human health, which could otherwise be caused by inappropriate waste handling of this product. The symbol on the product indicates that this product may not be treated as household waste. Instead it shall be handed over to the applicable collection point for the recycling of electrical and electronic equipment. Disposal must be carried out in accordance with local environmental regulations for waste disposal.

For more detailed information about treatment, recovery and recycling of this product, please contact your local council, your household waste disposal service or the retailer where you purchased the product.

CE DECLARATIONS OF CONFORMITY



This appliance has been manufactured to the strictest standards and complies with all applicable legislation, Low Voltage Directive [LVD] and Electromagnetic Compatibility [EMC].

UKCA DECLARATIONS OF CONFORMITY



This appliance has been manufactured to the strictest standards and complies with all applicable legislation.

TECHNICAL FICHE

This appliance conforms to all current and applicable energy regulations. To view the Technical Fiche that supports the energy labelling data, please visit the product page on our website www.caple.co.uk

WARRANTY

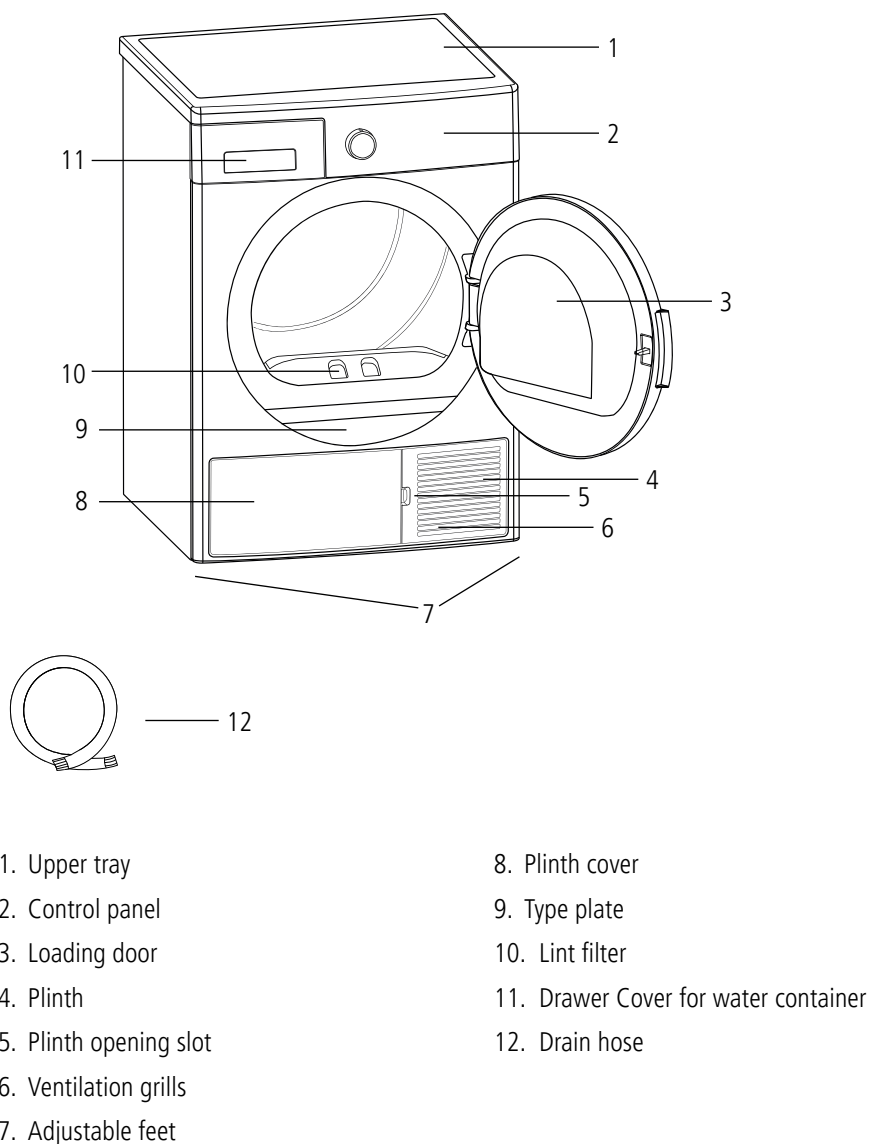
Your new appliance is covered by warranty. The warranty card is enclosed - if it is missing, you must provide the following information to your retailer in order to receive a replacement: date of purchase, model and serial number [placed on the inside of the appliance storage drawer]. Registration can also be completed online by visiting www.caple.co.uk.

Ensure you keep your warranty card safe, you may need to show it to Caple Service together with proof of purchase.

If you fail to show your warranty card you will incur all repair charges.

Spare parts are only available from Caple Service and spare parts authorised centres.

OVERVIEW OF TUMBLE DRYER



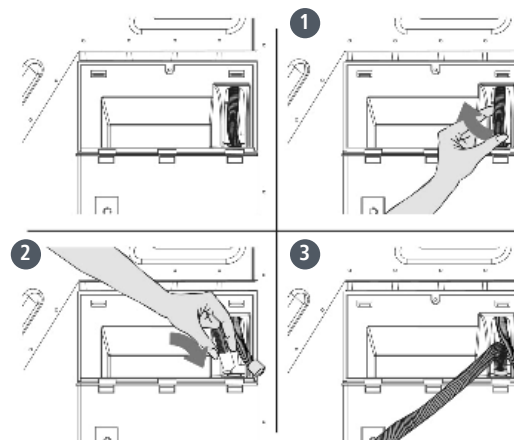
INSTALLATION

CONNECTION TO WATER OUTLET [WITH OPTIONAL DRAIN HOSE]

Water accumulates in the water tank during the drying process. You must empty the accumulated water after each drying process. Instead of periodically emptying the water tank, you can also use the water drain hose provided with the product to directly drain the water outside.

CONNECTING THE WATER DISCHARGE HOSE

1. Pull and take out the end of the hose at the back of the dryer. Do not use any tools to take out the hose.
2. Fit one end of the water discharge hose, which is provided with the product, to the slot from which you have removed the hose.
3. Fix the other end of the water discharge hose directly to the water outlet or sink.



! ATTENTION: The hose must be connected in a manner that it cannot be displaced. If the hose comes out during water discharge, there may be flooding in your house.

🚫 IMPORTANT: The water discharge hose must be installed at a height of 80cm maximum.

🚫 IMPORTANT: The water discharge hose must not be bent between the outlet and the product, folded or stepped on.

ADJUSTING THE FEET

- › For the dryer to work with less noise and vibration, it must be stable and balanced on its feet. Adjust the feet to ensure that the product is balanced.
- › Rotate the feet to the right and left until the dryer is even and stable.



IMPORTANT: Never remove the adjustable feet.

ELECTRICAL CONNECTION



ATTENTION: There is risk of fire and electric shock.

- › Your tumble dryer requires a 220-240V, 50hz mains supply.
- › The mains cord of your tumble dryer is equipped with an earthed plug. This plug should always be inserted to an earthed socket of 10amps.
- › If you do not have a suitable socket and fuse conforming with this, please ensure the work is carried out by a qualified electrician.
- › We do not take responsibility for damage that occurs due to the use of ungrounded equipment.



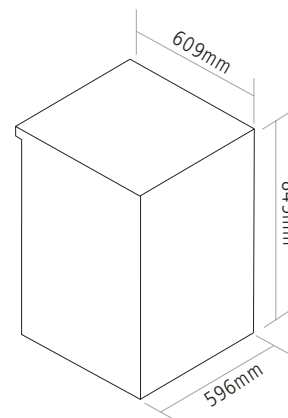
IMPORTANT: Operating your machine with low voltage will cause the life cycle of your machine to be reduced and performance to be restricted.

UNDER COUNTER INSTALLATION

- › Leave at least 3cm of space between the side and rear walls of the product and the underside of the worktop when installing your product under a counter.
- › Assembly / disassembly under a worktop must be done by a qualified installer.

INSTALLATION DETAILS

DIMENSIONS



STACKING YOUR APPLIANCE

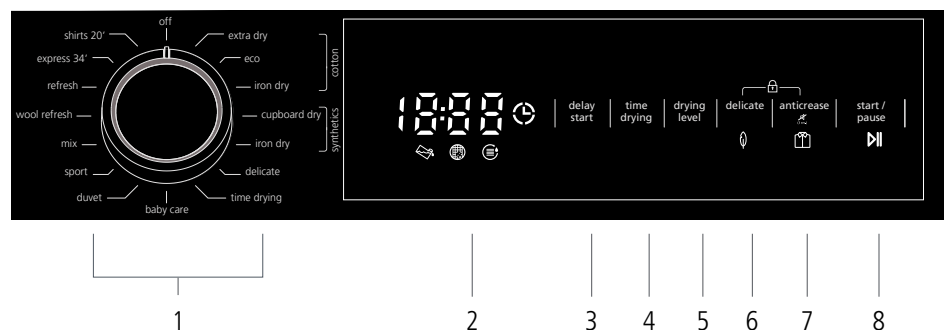
This tumble dryer can be combined with Caple washing machine WMF1100 in a washer-dryer stack. Caple stacking kit [STACKKIT] is available to purchase at www.caple.co.uk.

WARNING:

- › If the appliance is not correctly installed on the stacking kit, the appliance may fall.
- › Only stack your appliance using the Caple **STACKKIT**.
- › Do not install appliances from different manufacturers and with different dimensions in a washer-dryer stack.



CONTROL PANEL OVERVIEW



1. Programme Dial
2. Electronic Display
3. Delay Start Button
4. Time Drying Button

5. Drying Level Button
6. Delicate Button
7. Antcrease Button
8. Start/Pause Button

PROGRAMME DIAL

- › To select the desired programme, turn the programme dial either clockwise or anti-clockwise until the marker on the programme dial points to the chosen programme.
- › Make sure that the programme dial is set exactly to the programme you want.

ELECTRONIC DISPLAY

The display panel shows the washing delay timer [if set], temperature selection, spin speed, any additional functions selected. The display panel shows "End" when the selected programme is complete. The display panel also indicates if a fault has occurred with your machine.

DISPLAY SYMBOL



Water tank warning indicator. This will illuminate when the water tank needs emptying.



Lint filter cleaning warning indicator. This will illuminate to signal the lint filter needs cleaning.



Heat exchanger cleaning warning indicator. This will illuminate to signal the heater exchanged needs cleaning.

USING YOUR TUMBLE DRYER

PREPARING YOUR LAUNDRY

Follow the instructions on the labels of the laundry to be dried. Only dry items that have a statement/symbol that indicates "they can be dried in a dryer".

- › Do not operate the product with load amounts and laundry types other than those shown in 'Load Capacity'.

Suitable for drying in a dryer	Does not need ironing	Sensitive/Delicate drying	Not suitable for drying in a dryer
No drying	Do not dry-clean	At any temperature	At high temperatures
At medium temperatures	At low temperatures	Heatless	Hang to dry
Spread to dry	Hang wet to dry	Spread in shadow to dry	Suitable for dry cleaning

Do not dry thin, multi-layer or thick-layer fabrics together as they dry at different levels. For this reason, dry clothes together that have the same structure and fabric type. This way, you can get an even drying result. If you think that the laundry is still wet, you can select a time programme for additional drying. Please dry large [i.e. duvets] and small sized laundry separately in order to avoid having damp laundry at the end of the drying cycle.

IMPORTANT: Delicate fabrics, embroidered fabrics, woolen/silk fabrics, clothes made of delicate and expensive fabrics, airtight clothes and tulle curtains are not suitable for drying in the dryer.

PREPARING THE LAUNDRY TO BE DRIED

Risk of explosion and fire

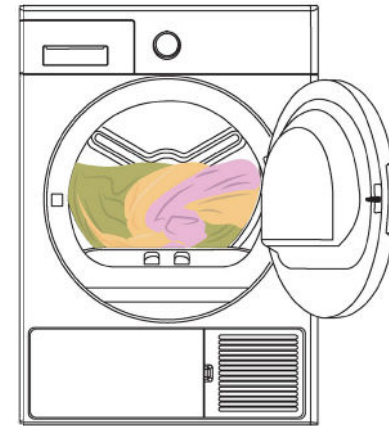
Remove all objects from pockets such as lighters and matches.

! ATTENTION: The drum of the dryer and the fabrics may get damaged.

- › The clothes may have become entangled during the washing process. Separate them from each other before placing them in the dryer.
- › Remove all objects in the pockets of the clothes and apply the following:
 - › Tie fabric belts, apron laces etc. to each other or use a laundry bag.
 - › Lock the zips, clasps and fasteners, do up the buttons of covers.
- › To get the best drying result, sort the laundry according to the textile type and drying programme.
- › Remove clips and similar metal parts from the clothes.
- › Woven goods such as t-shirts and knitted clothes generally shrink in the first drying. Use a protective programme.
- › Do not over-dry synthetics. This will cause creases.
- › When washing the laundry to be dried, adjust the amount of softener according to the data from the manufacturer of the washing machine.

LOAD CAPACITY

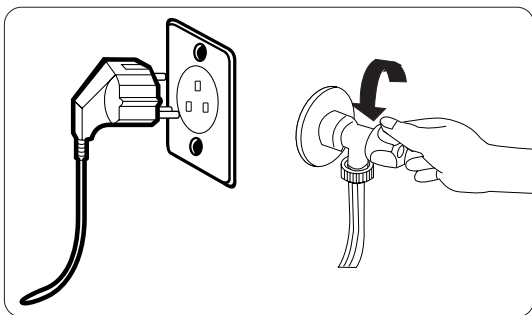
Follow the instructions in the “Table of Programmes”. Do not load the product with more laundry than the capacity.



IMPORTANT: It is not recommended to load the dryer with more laundry than the amount shown in the figure. When overloaded, the drying performance of the dryer will decrease and the dryer and laundry might be damaged.

LAUNDRY	DRY LOAD WEIGHT [GR]
Bedsheet [double]	725
Pillowcase	240
Bath Towel	700
Hand Towel	225
Shirt	190
Cotton Shirt	200
Jean	650
Fabric - Gabardine Trousers	400
T-shirt	120

OPERATING YOUR MACHINE



1. Plug your machine in to the mains supply.
2. Open the machine door.
3. Evenly spread your laundry in the machine.
4. Gently push the door until it clicks shut.

SELECTING A PROGRAMME

Use the programme table to select the most appropriate programme for your laundry.

STARTING THE PROGRAMME

The Start/Pause LED will flash during programme selection. Press the Start/Pause button to start the programme. The Start/Pause LED will illuminate to indicate that the programme has started and the drying LED will come on.

SELECTION STAND BY

After 15 minutes without use the appliance enters standby mode to reduce energy consumption. In this mode, “- - -” will flash on the display with reduced luminosity. To restart the machine move the programme dial to OFF and select a programme.

DURING THE PROGRAMME

If you open the door when the programme is running, the product will switch to standby mode. Once the door has been closed, press the Start/Pause key to resume the programme.

Do not open the loading door when the programme is running. If you have to open the door, do not keep it open for a long time.

PROGRAMME END

Once the programme is over, the warning LEDs for Start/Pause, water tank level, filter cleaning and heat exchanger cleaning will turn on. Additionally, an audible warning will be given at the end of the programme. You can remove the laundry to make the machine ready for a new load.



IMPORTANT: Clean the lint filter after every programme. Empty the water tank after every programme.



IMPORTANT: If you do not take out the laundry after the programme has ended, the 1-hour Anti Crease phase will automatically be activated. This function rotates the drum at regular intervals to prevent creases.

DRUM LIGHT

- › This product includes an LED Drum Light.
- › The light works automatically when you open the door. And automatically turns off after a while.
- › It is not an adjustable option to turn on/off.
- › Please do not try to replace or modify the LED Light.

ENERGY EFFICIENCY

- › You should operate the dryer to full capacity, but make sure that it is not overloaded.
- › When the laundry is being washed, the spin speed should be at the highest level possible. This will shorten the drying time and reduce energy consumption.
- › Make sure that the same type of laundry are dried together.
- › Please follow the recommendations in the user manual for programme selection.
- › For air circulation, leave an appropriate clearance on the front and back sides of the dryer. Do not cover the grills on the front side of the machine.
- › Unless necessary, do not open the door of the machine when drying. If you have to open it, do not keep it open for a long time.
- › Do not add new [wet] laundry during the drying process.
- › Hairs and lint that detach from the laundry and merge in the air are collected by the “Lint Filters”. Please make sure that the filters are cleaned before and after each use.
- › For models with a heat pump, make sure that the heat exchanger is cleaned at least once a month or after each 30 uses.
- › During the drying process, the environment where the dryer is installed must be well ventilated.

DRYING PROGRAMMES

PROGRAMME	DESCRIPTION
Cotton Extra Dry	This programme dries thick and multi-layer fabrics, such as cotton towels, bedsheets, pillowcases, bathrobes, at a high temperature to allow you to place them in a closet.
Cotton Cupboard Dry	This programme dries cotton pyjamas, underwear, tablecloths etc. to allow you to place them in a closet.
Cotton Iron Dry	This programme dries cotton laundry to prepare it for ironing. Laundry removed from the machine will be damp.
Synthetics Cupboard Dry	This programme dries synthetics, such as shirts, t-shirts, blouses, at a lower temperature compared to the cottons programme to allow you to place them in a closet.
Synthetics Iron Dry	This programme dries synthetics, such as shirts, t-shirts, blouses, at a lower temperature compared to the cottons programme to prepare them for ironing. Laundry removed from the machine will be damp.
Delicate	This programme dries thin clothes like shirts, blouses and silk garments at a low temperature to make them ready to wear.
Time Drying	To reach the required drying level at a low temperature, you can use the time programmes of 10 min. to 180 min. Regardless of the drying level, the programme stops at the desired time.
Baby Care	This programme dries delicate infant clothes at a low temperature to make them ready to wear.
Duvet	This programme is used to dry a duvet.
Sport	Sport programme is used for synthetic sport laundries like shorts, t-shirts at low temperature.
Mix	This programme dries cotton-synthetic mixed garments that do not discolour to make them ready to wear.
Wool Refresh	Wool refresh helps wool textiles to remove excess water after washing by applying low temperature and gentle movements of drum.
Refresh	Time drying option is selected from 10 minutes to 120 minutes without providing hot air, refresh is completed and bad odours can be eliminated.
Express 34'	1kg cotton shirts spun at a high speed in the washing machine are dried in 34 minutes.
Shirts 20'	2 to 3 shirts are ready to be ironed in 20 minutes.

PROGRAMME INFORMATION

PROGRAMME	LOAD [KG]	SPIN SPEED	APPROXIMATE AMOUNT OF REMAINING HUMIDITY	DURATION [MINUTES]
Cotton Extra Dry	10	1000	60%	245
Cotton Cupboard Dry	10	1000	60%	239
Cotton Iron Dry	10	1000	60%	171
Synthetics Cupboard Dry	5	800	40%	76
Synthetics Iron Dry	5	800	40%	62
Delicate	2	600	50%	55
Time Drying	-	-	-	-
Baby Care	3	1000	60%	78
Duvet	2,5	800	60%	140
Sport	4	800	40%	103
Mix	4	1000	60%	112
Wool Refresh	-	-	-	5
Refresh	-	-	-	10
Express 34'	1	1200	50%	34
Shirts 20'	0.5	1200	50%	20

ENERGY CONSUMPTION VALUES				
PROGRAMME	LOAD [KG]	WASHING MACHINE SPIN SPEED	APPROXIMATE AMOUNT OF REMAINING HUMIDITY	ENERGY CONSUMPTION VALUES [KWH]
Cotton Cupboard Dry	10	1000	60%	2,3
Cotton Iron Dry	10	1000	60%	1,67
Synthetics Cupboard Dry	5	800	40%	0,79
Power consumption in the "off mode" PO [W]				0.5
Power consumption in the "on mode" PL [W]				1

The Cotton Cupboard Dry programme is the standard drying programme that can be run with a full or half load and for which the information is given on the label and product receipt. This programme is the most energy efficient programme to dry normal wet cotton clothes.

*Energy labelling standard programme [EN 61121:2013]

For standard tests, the drain hose should be connected to water outlet according to the installation instructions in the related section.

All values in the table were determined in accordance with the EN 61121:2013 standard. Consumption values may vary from the values in the table depending on the fabric type, spin speed, environment conditions and voltage values.

ADDITIONAL FUNCTIONS

DELICATE

Delicate fabrics are dried for a longer time at a low temperature.

DRYING LEVEL

The humidity level obtained after drying can be increased by 3 levels. This way, the level of required dryness can be selected. The levels that can be selected other than the standard setting are 1, 2 and 3. After selection, the LED of the relevant drying level will turn on.

ANTICREASE

If you select "Anticrease" and do not open the door of the dryer at the end of the programme, the 1-hour Anticrease phase will extend to 2 hours. After selecting the Anticrease option, you will hear an audible warning. You can press the same button again to cancel the option. If you open the door or press the Start/Pause key while anti-crease is in progress, the function will be cancelled.

DELAY START

Use this function to delay the start of the drying cycle for 1 to 23 hours. You can activate the desired delay time by pressing the Start/Pause button. When the time is up, the selected programme will start automatically. During the 'delay time', options compatible with the programme can be activated/deactivated. Long pressing the Delay Start button changes the delay time continuously.

CANCEL AUDIBLE WARNING

The dryer gives an audible warning when programme dial is turned, buttons are pressed and at the end of programme. To cancel these warnings, press and hold the "Anticrease" button for 3 seconds. When you press the button, you will hear an audible warning, to signify the option has been cancelled.

TIME DRYING

To active this function, turn the dial to a 'Time Drying' programme and press the Time Drying button. Press the Start/Pause button to start the selected programme. Long pressing the time drying button changes the drying time continuously.

CHILD LOCK

The Child Lock function allows you to lock the buttons so that the drying cycle you have chosen cannot be changed unintentionally.

To activate child lock, press and hold the 'delicate' and 'Anticrease' buttons simultaneously for at least 3 seconds. "CL" will appear on the electronic display for 2 seconds when the child lock is activated and a audible alert will sound.

If any button is pressed or the selected programme is changed by the programme dial while the child lock is active, the "CL" symbol will appear on the electronic display for 2 seconds.

If the child lock function is active and a programme is running, when the programme dial is turned to the OFF position and another programme is selected the previously selected programme continues from where it was left.

To deactivate the child lock, press and hold the 'delicate' and 'anticrease' buttons simultaneously for at least 3 seconds until the "CL" symbol on the electronic display disappears.

NOTE: Child lock will not automatically cancel after the programme has completed.

PROGRAMMES AND FUNCTION COMPATIBILITY

PROGRAMME	FUNCTIONS						
	DELAY START	CANCEL AUDIBLE WARNING	CHILD LOCK	DELICATE	TIME DRYING	DRYING LEVEL	ANTICREASE
Cotton Extra Dry	√	√	√	√	x	√	√
Cotton Cupboard Dry	√	√	√	√	x	√	√
Cotton Iron Dry	√	√	√	√	x	√	√
Synthetics Cupboard Dry	√	√	√	√	x	√	√
Synthetics Iron Dry	√	√	√	√	x	√	√
Delicate	√	√	√	√ [default]	x	x	√
Time Drying	√	√	√	x	√	x	√
Baby Care	√	√	√	√	x	√	√
Duvet	√	√	√	√	x	x	√
Sport	√	√	√	√	x	√	√
Mix	√	√	√	√	x	√	√
Wool Refresh	√	√	√	x	x	x	√
Refresh	√	√	√	x	√	x	√
Express 34'	√	√	√	x	x	x	√
Shirts 20'	√	√	√	x	x	x	√

√	Selectable
x	Not Selectable

CLEANING AND MAINTENANCE



IMPORTANT: Do not use industrial chemicals to clean your dryer. Do not use a dryer that has been cleaned with industrial chemicals.

CLEANING THE LINT FILTERS

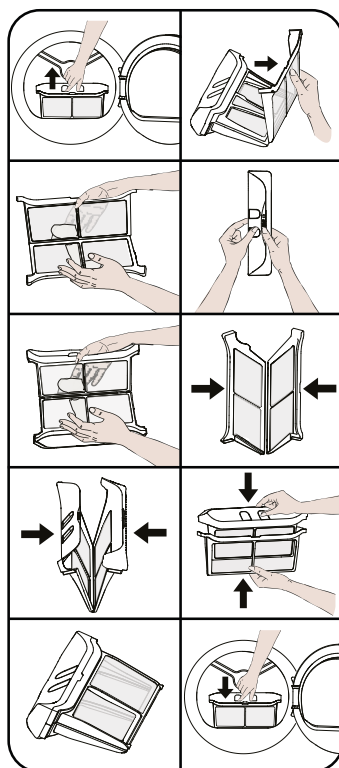
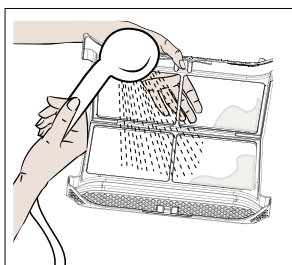


IMPORTANT: DO NOT FORGET TO CLEAN THE LINT FILTERS AFTER EACH USE.

To clean the lint filters:

1. Open the loading door.
2. Pull up the lint filters to remove.
3. Open the outer filter.
4. Clean the outer filter by hand or using a soft cloth.
5. Open the inner filter.
6. Clean the inner filter by hand or using a soft cloth.
7. Close the filters and fit the hooks.
8. Place inner filter inside of outer filter.
9. Refit the Lint filters.

After the dryer has been used for a certain period of time, if you encounter a layer that will cause obstruction on the filter surface, wash the filter with warm water to clean the layer. Dry the filter thoroughly before reinstalling it again.



EMPTYING THE WATER TANK

1. Pull the drawer cover and carefully take out the tank.
2. Empty the water in the tank.
3. If there is lint accumulated on the discharge cap in the tank, clean it with water.
4. Refit the water tank.

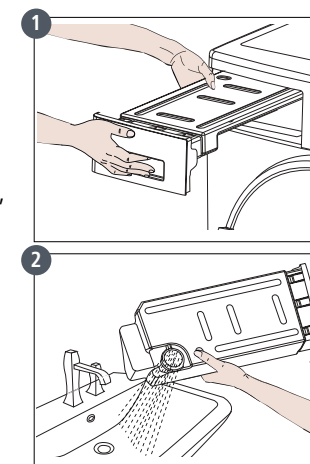
NOTE: If the water tank fills up during the running of the programme, the warning button lights up and the machine switches to standby mode. In this case, you need to empty the water tank and press the "Start/Stop" button to resume the programme. When the water tank is emptied, the warning indicator will go off and the programme will resume. During cycling, it is recommended to use a direct drain hose to avoid this warning.



IMPORTANT: Never remove the water tank when the programme is running. The water condensed in the water tank is not suitable for human consumption.



IMPORTANT: DO NOT FORGET TO EMPTY THE WATER TANK AFTER EACH USE.



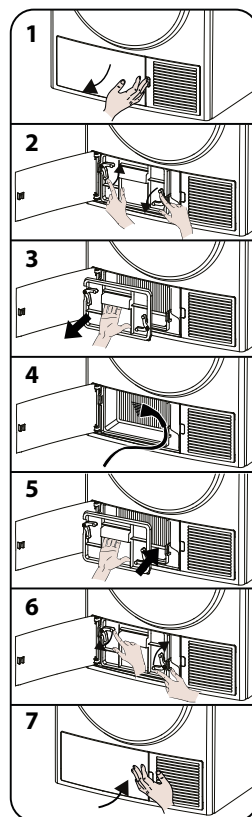
CLEANING THE HEAT EXCHANGER

IMPORTANT: Clean the heat exchanger when you see the warning “Heat Exchanger cleaning”.

IMPORTANT: EVEN IF THE HEAT EXCHANGER CLEANING WARNING LED IS NOT ON: CLEAN THE HEAT EXCHANGER AFTER EVERY 30 DRYING CYCLES OR ONCE A MONTH.

If the drying process is completed, open the loading door and wait for it to cool down.

1. Open the kick plate cover.
2. Unlock the exchanger cover by turning in the direction shown with arrows.
3. Take out the exchanger cover.
4. Clean the front surface of the exchanger.
5. Fit the exchanger cover.
6. Lock the exchanger cover by turning in the direction shown with arrows.
7. Close the kick plate cover.



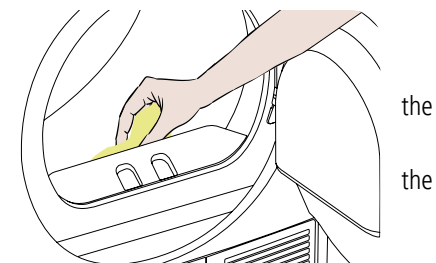
WARNING: DO NOT CLEAN WITH BARE HANDS SINCE THE EXCHANGER FINS ARE SHARP. THEY MAY HURT YOUR HANDS

CLEANING THE HUMIDITY SENSOR

Inside the machine, there are humidity sensors that detect whether the laundry is dry or not.

To clean the sensors:

1. Open the loading door of the machine.
2. If the machine is still hot due to drying process, wait for it to cool down.
3. Using a soft cloth soaked in vinegar, wipe metal surfaces of the sensor and dry them.



IMPORTANT: CLEAN THE METAL SURFACES OF THE SENSOR 4 TIMES A YEAR.

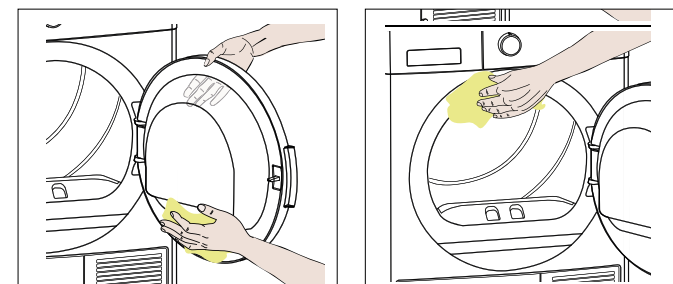
IMPORTANT: Do not use metal tools to clean the metal surfaces of the sensor.

WARNING: Due to the risk of fire and explosion, do not use solution agents, cleaning agents or similar products when cleaning the sensors.

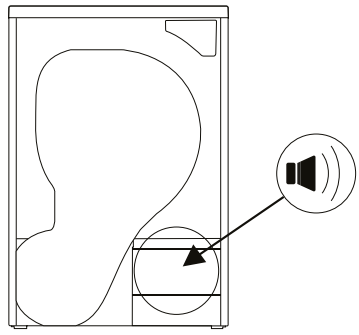
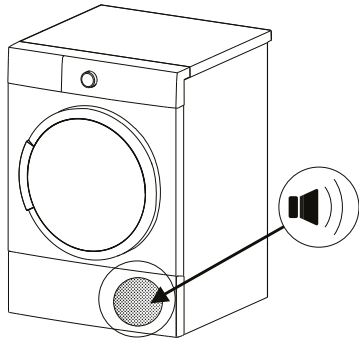
CLEANING THE INNER SURFACE OF THE LOADING DOOR

IMPORTANT: DO NOT FORGET TO CLEAN THE INNER SURFACE OF THE LOADING DOOR AFTER EACH DRYING PROCESS.

Open the loading door of the dryer and clean all of the inner surfaces and the gasket with a soft, damp cloth.



MACHINE SOUND


SOURCE OF SOUND	DEFINITION
	PUMP SOUND
	Pump is activated when the machine starts to work and during operation at certain intervals. It is normal to hear pump and water sound during this process.
	COMPRESSOR SOUND
	It is normal to hear a metallic sound from the compressor from time to time while the machine is running.

TROUBLESHOOTING

Your dryer is fitted with systems that continuously perform checks during the drying process to take the necessary measures and warn you in case of any malfunction.




WARNING: If the problem persists even if you have applied the steps in this section, unplug your machine from the mains power supply and contact Caple Service, tel: 0117 938 7420.

PROBLEM	POSSIBLE CAUSES	SOLUTION
The drying process takes a long time.	The surface of the lint filter might be clogged.	Wash the filter with lukewarm water.
	The heat exchanger might be clogged.	Clean the heat exchanger
	The ventilation grills in front of the machine might be closed.	Open the doors/windows to prevent the room temperature from rising too much.
	There might be a layer of limescale on the humidity sensor.	Clean the humidity sensor.
	The dryer might be overloaded with laundry.	Do not overload the dryer.
	The laundry might be insufficiently spun.	Select a higher spin speed on your washing machine.
Laundry comes out damp at the end of the drying process.	 The laundry that comes out hot at the end of the drying process generally feels more humid.	
	The programme used might not be suitable for the type of laundry.	Check the care labels on the laundry items, select a suitable programme for the type of laundry and additionally, use the time programmes.
	The surface of the lint filter might be clogged.	Wash the filter with lukewarm water.
	The heat exchanger might be clogged.	Clean the heat exchanger
	The dryer might be overloaded with laundry.	Do not overload the dryer.
	The laundry might be insufficiently spun.	Select a higher spin speed on your washing machine.
The dryer cannot be opened or the programme cannot be started. The dryer does not get activated when adjusted.	The dryer might not be plugged in.	Make sure that the plug is fitted in the socket.
	The loading door might be open.	Make sure that the loading door is properly closed.
	You might not have set a programme or pressed the Start/Pause key.	Make sure that the programme has been set and the dryer is not in the Standby [Pause] mode.
	Child lock might be active.	Deactivate the child lock.

PROBLEM	POSSIBLE CAUSES	SOLUTION
The programme has been interrupted for no reason.	The loading door might not be closed properly.	Make sure that the loading door is properly closed.
	There might have been a power failure.	Press the Start/Pause key to start the programme.
	The water tank might be full.	Empty the water tank.
Clothes have shrunk, felted or deteriorated.	The programme used might not be suitable for the type of laundry.	Check the care labels on the laundry items, select a suitable programme for the type of laundry.
Water leaking from the loading door.	There might be lint accumulated on the inner surfaces of the loading door and on the surfaces of the gasket of the loading door.	Clean the inner surfaces of the loading door and the surfaces of the gasket of the loading door.
The loading door opens on its own.	The loading door might not be closed properly.	Push the loading door until you hear the closing sound.
The water tank warning symbol is on/flashing.	The water tank might be full.	Empty the water tank.
	The water discharge hose might be bent.	If the product is connected directly to the water outlet, check the water discharge hose.
The heat exchanger cleaning warning symbol is on.	The heat exchanger might be unclean.	Clean the heat exchanger.
The filter cleaning warning symbol is on.	The lint filter might be unclean.	Clean the filter.
	The filter seat might be clogged by lint.	Clean the filter seat.
	There might be a layer that causes obstruction on the surface of the lint filter.	Wash the filter with lukewarm water.
The filter and heat exchanger cleaning warning symbol are flashing.	The filter seat might be clogged by lint.	Clean the filter seat.
	There might be a layer that causes obstruction on the surface of the lint filter.	Wash the filter with lukewarm water.
	The heat exchanger might be clogged.	Clean the heat exchanger.
The program can not be started and the filter warning led is blinking.	The filter may not be placed.	Replace the filter.
	The filter warning led is blinking even though the filter is placed.	Contact Caple Service.

AUTOMATIC FAULT WARNINGS AND WHAT TO DO

Your tumble dryer is equipped with a built-in fault detection system, indicated by a combination of flashing operation lights. The most common failure codes are shown below.

ERROR CODE	SOLUTION
E00	Contact Caple Service.
E03 / 	Empty the water tank, if problem does not solve, contact Caple Service.
E04	Contact Caple Service.
E05	Contact Caple Service.
E06	Contact Caple Service.
E07	Contact Caple Service.
E08	There may be voltage fluctuation in mains. Wait until voltage is appropriate for working range.

TECHNICAL SPECIFICATION

HEIGHT	Min: 845mm / Max: 855mm*
WIDTH	596mm
DEPTH	609mm
CAPACITY [MAX.]	10kg**
NET WEIGHT [WITH PLASTIC DOOR]	44,3kg
NET WEIGHT [WITH GLASS DOOR]	45,8kg
VOLTAGE	220-240V
POWER	1000W

*Min. height: Height with the adjustable feet not used. Max. height: Height with the adjustable feet extended to the maximum.

**Dry laundry weight before washing.



IMPORTANT: To improve the quality of the dryer, technical specifications are subject to change without prior notice.



IMPORTANT: The values declared have been obtained in a laboratory environment according to the relevant standards. These values may change depending on the environmental conditions and use of the dryer.



ATTENTION:

1. Due to safety reasons, legislation forces a room of at least 1m³ per 8g refrigerant for such equipment. For 110g propane, the minimum allowed room size would be 13.75m³.
2. Coolant: Risk of fire/risk of poisoning/risk of material damage and damage to the appliance. The appliance contains refrigerant which, although it is environmentally friendly, is flammable R290. Failure to dispose of it properly may result in a fire or poisoning. Dispose of the appliance properly and do not damage the pipes in the refrigerant circuit.
 - › Type of refrigerant: R290
 - › Quantity of gas: 110g
 - › ODP [Ozone Depletion Potential]: 0
 - › GWP [Global Warming Potential]: 3
3. Risk of explosion or fire. Remove any cigarette lighters and matches from pockets.
4. Do not place the dryer near open fires and ignition sources.

NOTES



Caple Service
Fourth Way
Avonmouth
Bristol
BS11 8DW

T: 0117 938 1900
E: service@caple.co.uk
www.caple.co.uk