

FOLLOW US



Thank you for your valued support and please help us spread the word through social media with images and comments, once your product has been installed.

[www.bidburyandco.com](http://www.bidburyandco.com)

   /bidburyandco

Team Bidbury  
EXCLUSIVE

REGISTER TODAY TO RECEIVE YOUR FREE EXTENDED WARRANTY

IT'S AS EASY AS 1,2,3!

[www.bidburyandco.com/team-bidbury](http://www.bidburyandco.com/team-bidbury)

# Bidbury & Co

TAYNTON



## INSTALLATION INSTRUCTIONS

## INTRODUCTION



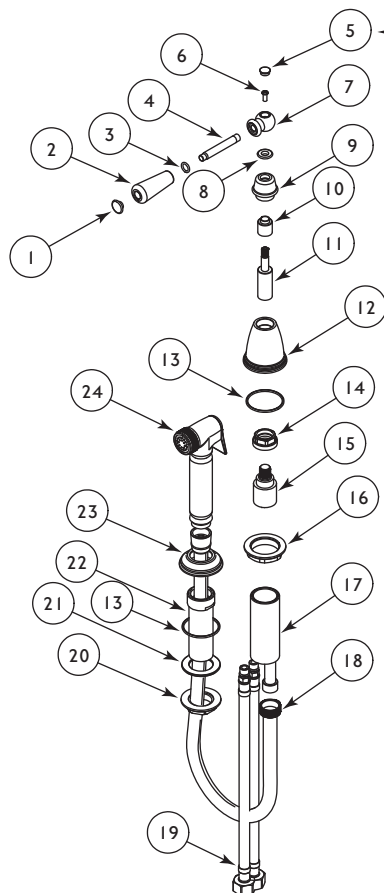
### PLEASE READ THESE INSTRUCTIONS CAREFULLY AND KEEP IN A SAFE PLACE FOR FUTURE REFERENCE.

This guide contains general installation instructions on how to install your product. However, it is important that the item is installed by a qualified and experienced professional. Therefore reliance on these instructions will be minimal.

Care taken during the installation will ensure long life and trouble free operations from the tap.

It is extremely important that all pipe work is flushed thoroughly after installation to avoid damaging the ceramic discs. It is recommended that the both hot and cold valves/handles on the tap are opened fully before you turn the water supply back on. This will ensure no debris will get lodged in the disc, causing possible damage.

## SPARE PARTS LIST



Please Note: This item can be carefully prised off with a sharp implement. The securing bolt for the handle can then be accessed and easily removed or tightened using a small allen key.

Further information maybe found by visiting: [www.bidburyandco.com/blog](http://www.bidburyandco.com/blog)

The set comprises of the following:

ITEM	QTY	DESCRIPTION
1	1	Ceramic Handle Nut
2	1	Ceramic Handle
3	1	O-Ring
4	1	Handle Stem
5	1	Indicie
6	1	Screw
7	1	Handle
8	1	Handle Ring
9	1	Handle Cover
10	1	Washer
11	1	Handle Extension
12	1	Cartridge Cover
13	2	O-Ring
14	1	Nut
15	1	Progressive Cartridge
16	1	Locking Nut
17	1	Cartridge Body
18	1	Spray Hose
19	2	Connection
20	1	Locking Nut
21	1	Washer
22	1	Handset Holder
23	1	Holder Plate
24	1	Spray Handset

Check that all parts are present.

## INSTALLATION



Ideally you will have flat faced isolation valves fitted to your supply pipework. If so close both the hot and cold isolation valves and open the tap levers to release any trapped water/pressure. You can now disconnect the old tap. If you do not have isolating valves fitted to the existing tap, you will then need to shut off the main water supply by following the next step.

First shut off any stop cock on your hot water system then, with your mains cold water stop cock also closed, open the lowest hot and cold taps in the house and allow to run until both hot and cold pipes are empty (the hot water storage cylinder always remains full but cannot empty due to being shut off).

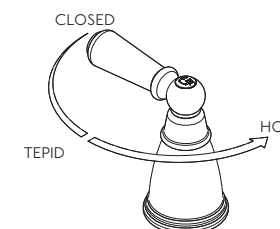
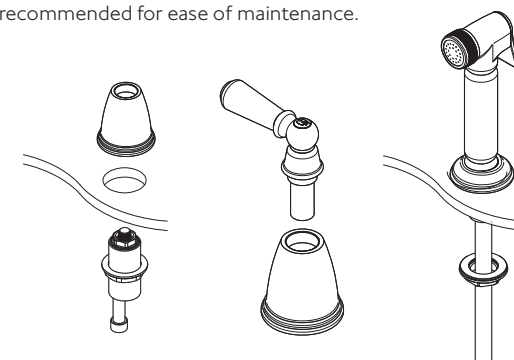
Fitting flat faced isolating valves to the inlet feeds is recommended for ease of maintenance.

### REMEMBER TO TURN OFF THE MAINS WATER SUPPLY BEFORE CONNECTING TO ANY EXISTING PIPE WORK.

- Identify all components before fitting;
- Flexible tailpipes should NOT be over tightened as this can cause damage to the rubber seals
- Install valve from the underside and tighten the escutcheon from the top
- Install handle assembly, positioning the handle so it can work as displayed
- Connect all hot and cold water supplies
- To install the side-spray assembly, just tighten the nut from the underside, run the spray hose through the holder and connect to cartridge assembly
- Check for joint and connection leaks, turn on the water supplies and open both taps letting the water flow for a few minutes
- Remedy if required

### ENSURE YOU HAVE THE CORRECT PRESSURE BEFORE FITTING:

- Minimum operating pressure 2.0 Bar
- Recommended operating pressure 2.5 Bar
- Maximum operating pressure 3.0 Bar



The side spray uses a sequential cartridge. This means that you will have cold, tepid and hot water, in this order, once you start opening the tap

## REGULAR DAILY CLEANING



The surface finish we use on our taps is very durable and hard wearing. However, care should still be taken when cleaning them. They should be cleaned only with warm soapy water followed by rinsing with clean water and drying with a soft cloth. All finishes are vulnerable to a strong cleaning agents and therefore substances such as household cleaners, disinfectants, denture cleaners, hair dyes can cause damage to the surface and should be avoided.

For more detailed information on taking care of your Bidbury tap visit: [www.bidburyandco.com/care-instructions/](http://www.bidburyandco.com/care-instructions/)