



FOLLOW US



Thank you for your valued support and please help us spread the word through social media with images and comments, once your product has been installed.

[www.bidburyandco.com](http://www.bidburyandco.com)    /bidburyandco

Team Bidbury  
EXCLUSIVE

REGISTER TODAY TO RECEIVE YOUR FREE EXTENDED WARRANTY

IT'S AS EASY AS 1,2,3!

[www.bidburyandco.com/team-bidbury](http://www.bidburyandco.com/team-bidbury)

# Bidbury & Co.

CHARLBURY



## INSTALLATION INSTRUCTIONS

## INTRODUCTION



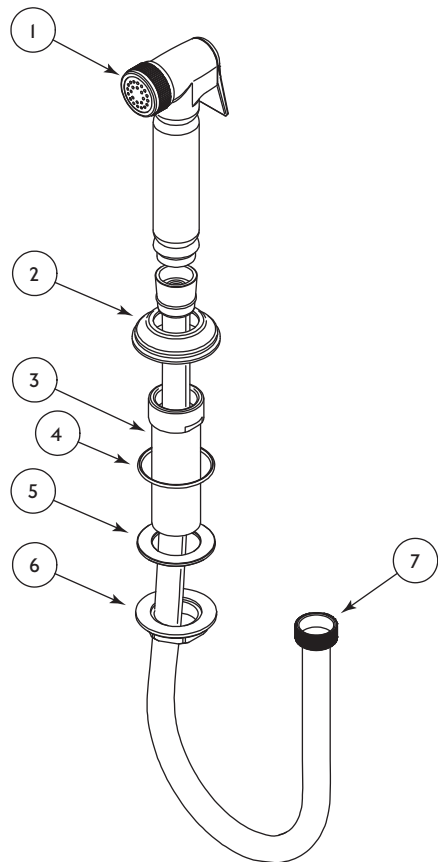
**PLEASE READ THESE INSTRUCTIONS CAREFULLY AND KEEP IN A SAFE PLACE FOR FUTURE REFERENCE.**

This guide contains general installation instructions on how to install your product. However, it is important that the item is installed by a qualified and experienced professional. Therefore reliance on these instructions will be minimal.

Care taken during the installation will ensure long life and trouble free operations from the tap.

It is extremely important that all pipe work is flushed thoroughly after installation to avoid damaging the ceramic discs. It is recommended that the both hot and cold valves/handles on the tap are opened fully before you turn the water supply back on. This will ensure no debris will get lodged in the disc, causing possible damage.

## SPARE PARTS LIST



The set comprises of the following:

ITEM	QTY	DESCRIPTION
1	1	Spray Handset
2	1	Holder Plate
3	1	Handset Holder
4	2	O-Ring
5	1	Washer
6	1	Locking Nut
7	1	Spray Hose

Check that all parts are present.

## INSTALLATION



Unless you have an individual isolating valve fitted, you will need to shut off your mains cold water stop cock, open the lowest cold taps in the house and allow to run until pipes are empty.

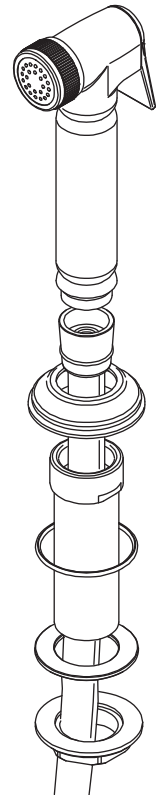
Fitting an isolating valve to the inlet feed is recommended for ease of maintenance.

**REMEMBER TO TURN OFF THE MAINS WATER SUPPLY BEFORE CONNECTING TO ANY EXISTING PIPE WORK.**

- Identify all components are included before fitting.
- Check the hole size is between 31-35mm.
- Check the surface you are mounting to is between 15mm-50mm.
- Install the handset holder by tightening the fixing nut underneath. Do not overtighten.
- Connect the flexible hose to the handset after passing it through the holder.
- **YOU MUST REDUCE THE COLD WATER PRESSURE** before connecting the water supply.
- Fit a pressure reducing valve to control the pressure. We recommend setting it to a maximum of 2bar.
- Ensure you have a 3/8" male connection on your supply pipe.
- Fit an isolating valve on the supply to the handset connection.
- Before opening the cold water supply for the first time, press and hold the lever on the handspray. Open the isolating valve fully and let the water run straight through the handset for 10-20 seconds.
- Check all connections are secure and water tight.

**EXCESSIVE PRESSURE WILL DAMAGE THE HANDSET & INVALIDATE THE WARRANTY.**

- Minimum operating pressure required: 0.5bar



## REGULAR DAILY CLEANING



The surface finish we use on our taps is very durable and hardwearing. However, care should still be taken when cleaning them. They should be cleaned only with warm soapy water followed by rinsing with clean water and drying with a soft cloth. All finishes are vulnerable to a strong cleaning agents and therefore substances such as household cleaners, disinfectants, denture cleaners, hair dyes can cause damage to the surface and should be avoided.

For more detailed information on taking care of your Bidbury tap visit:  
[www.bidburyandco.com/care-instructions/](http://www.bidburyandco.com/care-instructions/)