



**Fitting type:** Apron front / undermount

**Sink handing:** Not handed

**Finish style:** Brushed steel

- **Min. base unit (mm):** 600
- **Packaged size L x W x D:** 700 x 560 x 290mm
- **Supplied boxed or sleeved:** Boxed - brown
- **Boxed weight:** 13.76 kg
- **Sink only weight:** 11.32 kg

- Durable stainless steel construction throughout
- Softened square edges for a sharp but easy clean look
- Smooth lined luxury Orbit waste supplied as standard
- Deep bowl(s) to accept larger cookware
- Supplied with all parts required

### Included parts:



1 x AX1001 (m)  
90mm (1.5") Orbit manual basket  
strainer waste - short bolt



1 x AX1008 (m)  
1.0 Bowl pipework



1 x AX1105 (m)  
Rectangular overflow (55x30mm  
vertical)

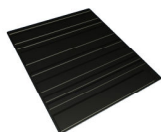


1 x AX4046 (m)  
Fitting & care instructions & data sheet  
- st/st Belfast sink

### Recommended accessories:



1 x AX2503  
High & Dry drainer rack - White and  
grey



1 x AX2501  
Silicone drainer mat 330 x 390mm

All accessories can be  
purchased directly from  
[www.abode-shop.co.uk](http://www.abode-shop.co.uk)  
or phone 01226 283434

### Materials and workmanship warranty summary:

- Sink materials & workmanship 10 years.
- Waste kits 1 year.
- Connecting pipework 1 year.

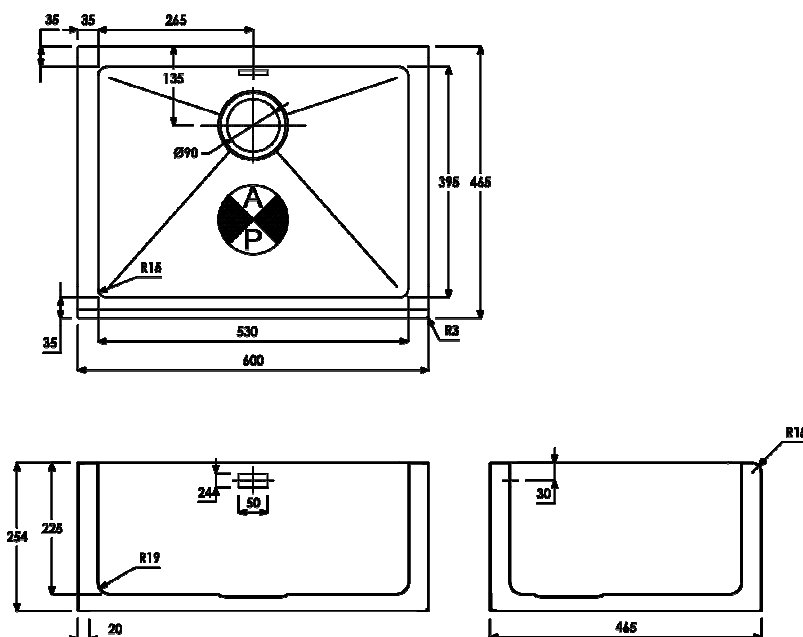
### Care instructions:

- Clean the products regularly using soapy water and a non abrasive cloth, regular cleaning will prevent the build up of lime scale and dirt.
- Avoid contact with corrosive or abrasive substances.
- After cleaning rinse thoroughly with clean water then dry.
- For more detail see supplied booklet or [www.abodedesigns.co.uk](http://www.abodedesigns.co.uk)

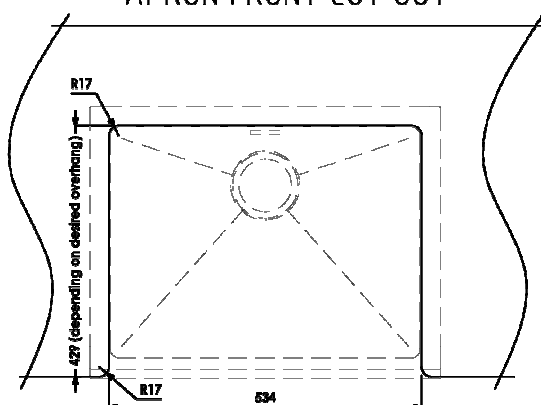
## Product dimensions and installation information: note:



symbol indicates position of acoustic pad on stainless products.



### APRON FRONT CUT OUT



#### Additional notes:

Overall product size: 600 x 465 x 254 corner radius 3mm

Taphole(s) detail: None

Compatibility with large square taps:

Wastehole(s) detail (mm): 90 / N/A / N/A (nb. 90mm wastes accept a waste disposal unit)

Min. base unit (refers to space required for bowl, tap and overflow only): fits 600mm carcass

Min. Recessed fitting width: required (bowl(s), tap and overflow): 600 mm

\*Worktop cut out size: 534x429 corner radius 17mm, for .DXF cut files please see [www.abode.eu](http://www.abode.eu)

Min. & Max worktop depth or clip depth reach range: 0 - 0mm

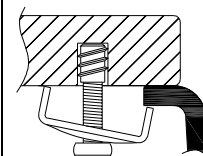
Fitting template supplied? No, use cut out instructions as supplied

Dishwasher under drainer? Distance from top of worktop to underside of the drainer n/amm



### \*Important, fabricator / installer notes for undermount & flushmount sinks:

The cut out size indicated is aligned with outside edge of the bowl top radius (see example below).



You should confirm with your client if the worksurface cutout is to be cut flush, inside or outside this suggested perimeter shape & size.

If you create the cutout smaller or larger than the indicated size then the fit of the accessories may be affected and should be physically checked.

#### General:

All details are provided in good faith but do not include the tolerances of the material or manufacturing process.

**We request that a test cutout is made in scrap timber and checked against the actual sink to be installed before committing to cutting the final worksurface.**

**Abode can not accept liability for problems or costs incurred by failure to follow this request.**

Note: the dimensions on ceramic fireclay products are subject to wider tolerances due to the nature of this natural material and the firing process.

CAD cutout files can be downloaded from [www.abodedesigns.co.uk](http://www.abodedesigns.co.uk)

### Bowl details: (sizes in mm unless specified otherwise)

#### Bowl 1 (typically main bowl):

Bowl 1 size L x W x D (mm): 530 x 395 x 225

Bowl 1 construction: Welded, 1.20mm

Bowl 1 floor radius (mm): 19

Bowl 1 Wastehole diameter (mm): 90

Bowl 1 overflow: Rectangular flush

Bowl 1 texture: Brushed stainless

Bowl 1 apx. volume (litres): 38.10

#### Bowl 2 (typically 1/2 or 3/4 bowl):

Bowl 2 size L x W x D (mm): N/A x N/A x N/A

Bowl 2 construction: N/A, N/Amm

Bowl 2 floor radius (mm): N/A

Bowl 2 Wastehole diameter (mm): N/A

Bowl 2 overflow: N/A

Bowl 2 texture: N/A

Bowl 2 apx. volume (litres): N/A

#### Bowl 3:

Bowl 3 size L x W x D (mm): N/A x N/A x N/A

Bowl 3 construction: N/A, N/Amm

Bowl 3 floor radius (mm): N/A

Bowl 3 Wastehole diameter (mm): N/A

Bowl 3 overflow: N/A

Bowl 3 texture: N/A

Bowl 3 apx. volume (litres): N/A