

# Built under extractor Instruction manual

## BUCH



# CONTENTS

Safety Warnings	3
Safety Instructions	4
Electrical Shock Hazard	7
Environmental Protection	8
Product Overview	9
Ducting Options	10
Installation Position	11
Installation	12
Operating Instructions	13
Guarantee	14
Exclusions	15

Please keep this instruction manual for future reference

## IMPORTANT

This appliance must only be used for the purpose it is intended. Other types of use are not permitted and may prove dangerous. Caple will not be held liable for any damage caused by the incorrect use of the appliance

- Do not use any accessories or attachments not recommended by Caple as this may result in fire, electric shock or injury.
- To protect against fire, electrical shock and injury to persons, do not immerse cords or plugs in water or any other liquid.
- Never touch the appliance with wet or damp hands.
- Never pull the power cable as you could damage it. If the appliance is faulty, do not attempt to repair it. Isolate it from the mains electric supply and contact Caple Service either by phone 0117 938 7420 or email [service@caple.co.uk](mailto:service@caple.co.uk)
- Keep all packaging (including plastic bags, polystyrene foam etc) out of the reach and away from children.
- Do not rest large or unstable objects on any part of the appliance.

Caple cannot be held responsible for injuries or losses caused by incorrect use or installation of this product. Please note that Caple reserve the right to invalidate the guarantee supplied with this product following incorrect installation or misuse of the appliance. Under no circumstances should any external covers be removed for servicing or maintenance except by suitably qualified personnel.

## **SAFETY INSTRUCTIONS:**

- Never let children operate the machine.
- The cooker hood is for home use only, not suitable for barbecuing, restaurants or other commercial purposes.
- The cooker hood and its filter should be cleaned regularly in order to keep in good working condition.
- Clean the cooker hood according to the instruction manual to reduce the risk of fire.
- When using a gas hob, do not leave naked flames under the extractor.
- Before connecting this appliance check that the power supply cord is not damaged.

Please keep this instruction manual for future reference

- If the room where the hood is to be used contains a fuel burning appliance such as a central heating boiler then its flue must be of the sealed or balanced flue type. If other types of flue or appliances are fitted ensure that there is an adequate supply of air to the room.
- The air must not be discharged into a flue that is used for exhausting fumes from appliances burning gas or other fuels.
- Regulations concerning the discharge of air have to be conformed to.
- Do not flambé under the cooker hood.
- Never leave frying pans unattended during use as over-heated fats and oils may catch fire.
- To ensure the best performance, we recommend switching on the extractor 15 minutes before cooking and leave it running 15 minutes after. This will ensure that the air in the kitchen is being circulated before cooking commences and the air is being cleaned after cooking has finished.
- The performance of your extractor will vary depending on a number of factors. These include type of extraction, room volume, length of ducting, ventilation available and the cleanliness of the filters.

- This appliance is not intended for use by persons (including children) with reduced physical, sensory or mental capabilities, or lack of experience and knowledge, unless they have been given supervision or instruction concerning use of the appliance by a person responsible for their safety.
- Children should be supervised to ensure that they do not play with the appliance.
- Cleaning and user maintenance must not be made by children without supervision.
- Never immerse the appliance in water.
- This product is not designed for commercial use, it is a household appliance only. It is not intended to be used in:
  - Staff kitchen areas in shops, offices and other working environments.
  - Bed and breakfast type environments.
  - By clients in hotels, motels and other residential type environments.
- To avoid all risk, if the power cable is damaged, it must only be replaced by a Caple appointed engineer.

- Appliances can be used by persons with reduced physical, sensory or mental capabilities or lack of experience and knowledge if they have been given supervision or instruction concerning use of the appliance in a safe way and understand the hazards involved.
- Children must not play with this appliance.
- When not in use and before cleaning, always isolate the appliance from the electrical supply.

## **ELECTRICAL SHOCK HAZARD**

- Only plug this unit into a properly earthed outlet. If in doubt seek advice from a suitably qualified engineer.
- Failure to follow these instructions can result in death, fire, or electrical shock.
- This appliance must be connected to the mains by a competent person. We recommend that the appliance is connected by a qualified electrician who is a member of the N.I.C.E.I.C who will comply with the I.E.E and local regulations. Electrical information can be found on the rating plate.



## ENVIRONMENTAL PROTECTION

Waste electrical products should not be disposed of with household waste. Please recycle where facilities exist. Check with your Local Authority or retailer for recycling advice.

This appliance is marked according to the European directive 2002/96/EC on Waste Electrical and Electronic Equipment (WEEE). By ensuring this product is disposed of correctly, you will help prevent potential negative consequences for the environment and human health, which could otherwise be caused by inappropriate waste handling of this product. The symbol on the product indicates that this product may not be treated as household waste. Instead it shall be handed over to the applicable collection point for the recycling of electrical and electronic equipment. Disposal must be carried out in accordance with local environmental regulations for waste disposal.

For more detailed information about treatment, recovery and recycling of this product, please contact your local council, your household waste disposal service or the retailer where you purchased the product.

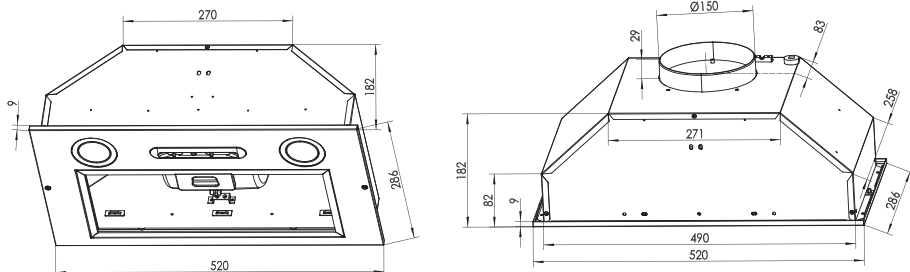
## CE DECLARATIONS OF CONFORMITY

This appliance has been designed, constructed and marketed in compliance with safety requirements in force. This appliance has been manufactured to the strictest standards and complies with all applicable legislation.

Please keep this instruction manual for future reference



# PRODUCT OVERVIEW



## IMPORTANT:

1. Please read the entire instructions before installing the rangehood.
2. Always switch power off prior to installation
3. Stainless steel is very easily damaged during installation if scratched or knocked by tools. Protect the rangehood with the cardboard box or plastic bag during installation.
4. All electric work must be done in accordance with the local and national electrical codes as applicable.
5. For safety, this product must be earthed.
6. A power outlet should be within 1500mm of the power cord exit from the rangehood.
7. The power socket must be accessible and enable the end user to isolate the rangehood from the power for the purpose of internal cleaning or maintenance.
8. 150mm round ducting adapters are supplied. All other ducting accessories are not supplied. All ducting must comply with local requirements and building codes.
9. See Ducting options next page.

Please keep this instruction manual for future reference

## CONTENTS OF PACKAGING:

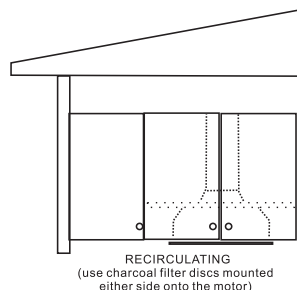
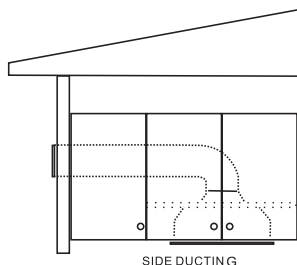
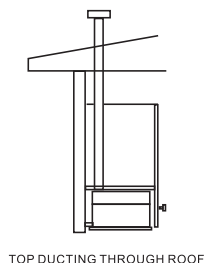
- 1 x Hood body
- 1 x face plate
- 1 x 150mm ducting adapter
- 1 x packet of fasteners and wall plugs

## TYPICAL EQUIPMENT REQUIRED:

1. Electric drill
2. Screwdriver
3. Tape measure
4. Spirit level
5. Duct tape (if ducting)
6. Jig saw (if ducting)
7. Ladder (if ducting)

## DUCTING OPTIONS

The method of ducting should be carefully considered before installing the range hood. The guide below recommends the ducting components to use for all common ducting configuration - through the top of the home (the roof and soffit) and through the external wall. 150mm round ducting should be used in conjunction with this model rangehood. Alternatively this rangehood can be operated in recirculation mode (see Recirculation mode Pg.5).



**NOTE: THIS PRODUCT SHOULD BE INSTALLED USING 150MM DUCTING**

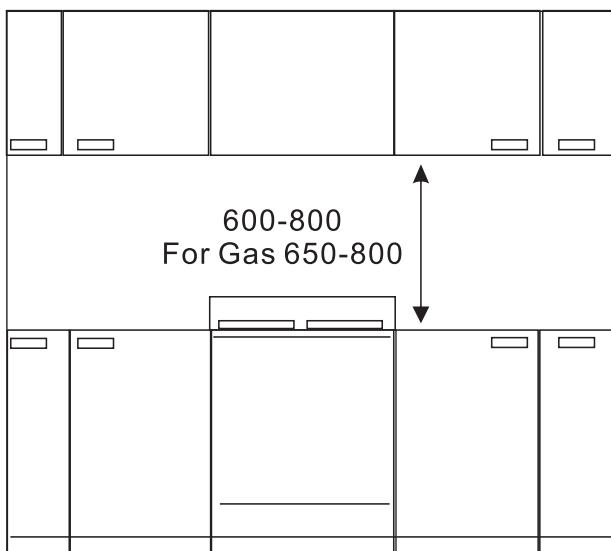
Please keep this instruction manual for future reference

Extra lengths and/or bends may be required, depending on the length required and whether there is any structural material in the run e.g. rafters.

Some authorities require rangehoods to be vented outside. Ducted models should comply with this requirement in every aspect.

## INSTALLATION POSITION

When installing the rangehood, the lower edge of the unit must be a minimum of 600mm (650 for gas cooker) above the cooking range. The recommended position for the hood is 650mm above hotplates.



Pictures: Minimum height from the hob surface to the underside face of the rangehood is : 600mm for electric hob, 650mm for gas hob.

### Notes:

If the instructions for the gas hob specify a greater distance, this has to be taken into account. Any installation above 750mm will compromise performance.

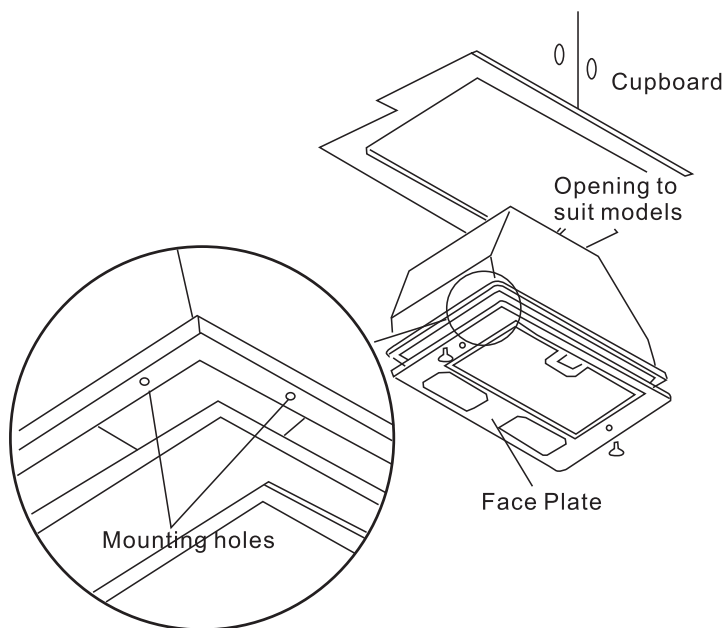
## INSTALLATION

### MOUNTING THE RANGEHOOD

Fit the ducting adapter to the rangehood using the short screws supplied. Provide an opening on the underside of the cupboard to suit models/provide 490mm x 256mm for 600 model.

Remove the face plate of the rangehood by undoing the two visible screws located on both side-ends. Eight mounting holes around the unit then are accessible.

Lift the rangehood and fit through the opening cupboards. Secure unit using long screws supplied. Refit face plate.



Please keep this instruction manual for future reference

# OPERATING INSTRUCTIONS

## Controls

### **Light:**

The light can be operated independently by sliding the light switch on/off despite the working status of the fan. Please refer to the icon switch panel.

### **FAN:**

The fan is operated by sliding the power switch on. It can be run at three different speeds (Speed 1/Speed 2/Speed 3) depending on the cooking requirements. Please refer to the icon on the switch panel.

### **CLEANING AND MAINTENANCE:**

Switch off the rangehood before cleaning or maintenance. To prevent surface damage never use abrasive or oil based liquid cleaners. To clean the surfaces of the appliance, use mild detergent and warm water. In areas of high humidity and coastal environments cleaning should be carried out frequently.

### **WARNING:**

A build up of oil may occur if the range is not cleaned regularly.

### **FILTER MAINTENANCE:**

To maintain efficiency, the filters should be removed regularly (approximately monthly), and washed using hot soapy water of the dishwasher.

### **Note:**

some discolouration of the frame may occur if washed in the dishwasher.

Rangehoods fitted with charcoal filters are designed to remove grease and odours from cooking vapours prior to the cleansed air re-entering the kitchen. (when the rangehood is in recirculation mode). Charcoal filters should be replaced every 6 months, these can be ordered from [www.caple.co.uk](http://www.caple.co.uk) (code CAP73CF)

### **Note:**

Fully saturated charcoal filters can become a barrier to air movement therefore limiting rangehood performance. In the event of fire, grease laden filters could be flammable and therefore require replacement is recommended.

**Bulb replacement:**

To replace a bulb, first disconnect the rangehood from the power supply. Use a small blade screwdriver to prise off the lamp cover. Care must be taken to avoid the lamp lens falling to the hob top. The bulb is a screw fit into the lamp socket. Insert the replacement bulb into the lamp socket and replace the lamp cover.

**Parts and Accessories list:**

1. Charcoal filter (replacement code CAP73CF)
2. LED 2x2W

Replacement charcoal filters can be ordered from [www.caple.co.uk](http://www.caple.co.uk), order the code CAP73CF for this extractor. You can also order by calling 0117 938 1900

## **GUARANTEE**

Caple undertake that if within 2 years from the date of the purchase, this appliance or any part thereof that is proved to be defective by reason only of faulty workmanship or materials, we will at our option repair or replace the same free of any charge for labour or materials on condition that:

- Documentation must be provided before a guarantee repair commences to confirm that the extractor is within the guarantee period.
- The appliance has been correctly installed and used only on the electrical supply stated on the rating plate.
- The appliance has been used for normal domestic purposes only, and in accordance with the operating and maintenance instructions.
- The appliance has not been serviced, maintained, repaired, taken apart or tampered with by any person not authorised by us.
- All service work under this guarantee must be undertaken by Caple Service Centre.
- Any appliance or defective part replaced shall become the property of this company.
- If a service call is made and it is found that the installation has not been carried out correctly or customer misuse/abuse is involved the cost of the service call has to be paid for by the user before any service work is carried out.

Please keep this instruction manual for future reference

## EXCLUSIONS

### **THIS GUARANTEE DOES NOT COVER:**

- Damage or calls resulting from transportation, improper use or neglect, the replacement of any light bulbs or removable parts of glass or plastic.
- Costs incurred for calls to put right appliances improperly installed or calls to appliances outside the United Kingdom.
- Appliances found to be in use within a commercial environment, plus those which are the subject of rental agreements.
- This guarantee is in addition to and does not affect your statutory and legal rights.

Caple Service  
Fourth Way  
Avonmouth  
Bristol  
BS11 8DW

t: 0117 938 7420  
e: [service@caple.co.uk](mailto:service@caple.co.uk)  
[www.caple.co.uk](http://www.caple.co.uk)

Please keep this instruction manual for future reference