

ceiling extractor
instruction manual



CE1122SS / CE1122WH



CONTENTS

WARNINGS	3
ENVIRONMENTAL PROTECTION	7
INSTALLATION	8
FREESTANDING INSTALLATION	9
BUILT-IN INSTALLATION	11
REMOTE CONTROL	17
TIMING	20
MAINTENANCE	21

WARNINGS

- This appliance is not intended to be used by young children or infirm persons without supervision. Young children should be supervised to ensure they do not play with the appliance.
- The air extracted cannot be conveyed through or into a duct used to let out fumes from appliances fed by energy other than electric power (eg. central heating, radiators, water heaters, etc.). To evacuate the air outlet, please comply with the pertaining rules given by competent authorities.
- Provide the room with adequate ventilation when a cooker hood and appliances fed by energy other than electric power (gas, oil, or coal stoves, etc.) are used simultaneously.
- The cooker hood, when evacuating the extracted air, could generate a negative pressure in the room which must not exceed the limit of 0.04mbar, in order to avoid the suction of exhausts deriving from the heating source. Therefore the room should be provided with air intakes to allow a constant flow of fresh air.
- If the rating label in the cooker hood **shows** the symbol , the appliance is built in class II° and it **does not need** any earth connection. If the rating label in the cooker hood does not show the symbol , the appliance is built in class I° and it **needs** the earth connection

- When performing the electrical connections on the appliance, please make sure that the current tap is provided with earth connection and that voltage values correspond to those indicated on the rating label placed inside the appliance itself.
- Before carrying out any cleaning or maintaining operations, the appliance needs to be removed from the electric grid.
- If the appliance is not provided with a non-separable flexible cable and plug, or with another device ensuring unipolar disconnections from the grid, with an opening distance between the contacts of at least 3 mm, then such disconnecting devices must be supplied within the fixed installation.
- If the appliance is fitted with a supply cord and a plug, the appliance has to be put in a place where the plug can be reached easily.
- The use of materials which can burst into flames should be avoided in close proximity of the appliance.
- When frying, please pay particular attention to fire risk due to oil grease. Being highly inflammable, fried oil is especially dangerous.
- Do not use uncovered electric grills. In order to avoid possible fire risk, all instructions for grease filter cleaning and grease deposits removal should be strictly followed.

- This appliance complies with all relevant local and national safety requirements. Inappropriate use can, however, lead to personal injury and damage to property.
- The cooker hood is not intended for outdoor use.
- It must only be used as a domestic appliance to extract vapours and remove odours from cooking. Any other usage is not supported by the manufacturer and could be dangerous.
- Where a recirculation cooker hood is fitted above a gas hob, please ensure that there is an adequate supply of fresh air into the room in which it is installed. Please seek the advice of a qualified gas fitter (e.g. GasSafe in the UK) if necessary.
- Children under 8 years of age must be kept away from the cooker hood unless they are constantly supervised.
- Children 8 years and older may only use the cooker hood unsupervised if they have been shown how to use it safely and recognise and understand the consequences of incorrect operation.
- The electrical safety of this appliance can only be guaranteed when correctly earthed. It is essential that this standard safety requirement is met. If in any doubt please have the electrical installation tested by a qualified electrician.

- Do not connect the appliance to the mains electricity supply by a multi-socket unit or an extension lead. These are a fire hazard and do not guarantee the required safety of the appliance.
- The cooker hood can get very hot during cooking due to heat rising from the hob.
- Do not touch the housing or the grease filters until the cooker hood has cooled down.



ENVIRONMENTAL PROTECTION

Waste electrical products should not be disposed of with household waste. Please recycle where facilities exist. Check with your Local Authority or retailer for recycling advice. This appliance is marked according to the European directive 2012/19/EU on Waste Electrical and Electronic Equipment (WEEE).

By ensuring this product is disposed of correctly, you will help prevent potential negative consequences for the environment and human health, which could otherwise be caused by inappropriate waste handling of this product. The symbol on the product indicates that this product may not be treated as household waste. Instead it shall be handed over to the applicable collection point for the recycling of electrical and electronic equipment. Disposal must be carried out in accordance with local environmental regulations for waste disposal.

For more detailed information about treatment, recovery and recycling of this product, please contact your local council, your household waste disposal service or the retailer where you purchased the product

CE DECLARATIONS OF CONFORMITY **CE**

Radio Equipment Directive (RED) 2014/53/EU

This Declaration is issued under the sole responsibility of the manufacturer.

Hereby, Caple declares that the radio equipment included in the product is in compliance with the RED directive 2014/53/EU.

The full text of the EU Declaration of Conformity is available on our website www.caple.co.uk.

Please keep this instruction manual for future reference

INSTALLATION

NOTE: Two people are needed for the installation of this product.

It is possible to open the glass/steel panels, which cover the grease filters, by slightly pulling the panel on a side, as shown on fig.1 In order to allow the hood to perform correctly, it is recommended to install the appliance at a distance of 2000 - 2100 mm from the floor. Before starting the appliance installation, please check that all components are not damaged, in such a case contact your retailer and do not carry out the installation. Furthermore, please read carefully all of the following installation instructions.

- For the best performance we recommend an exhausting pipe with a maximum length not exceeding 5 meters.
- Limit the number of elbows in the piping, since each elbow reduces the air capacity of 1 linear meter. (Eg. if you use 2 x 90° elbows, the length of piping should not exceed 3 meters).
- Avoid abrupt direction changes.
- Use a 150 mm constant diameter pipe for the whole length.
- Use ducting approved by the local standards in force.

NOTE: For more information on venting, please see our 'Extraction & Ventilation guide' available on our website www.caple.co.uk.

FREESTANDING INSTALLATION

Recirculating version

The product is ready for this version.

Attention:

Let the power cord pass through the hood hole, as shown in fig. 2.



Mark the holes to fix the product to the false ceiling.

Having marked the holes, make them by using a drill bit (diameter 8mm), and place in the holes the metric fixing plugs provided.

Open the glass panels, following the instructions mentioned in the previous section and remove the grease filters and carbon filters.

When fixing the hood to the ceiling allow the electric cable to pass through into the hood (not supplied). Fix the hood to the ceiling using the four screws provided.

Make the electrical connection in to the metal box (fig.18). The power supply metal box is positioned close to the electrical components and you can see them after removing the grease filters.

Please connect the cable as shown in fig. 18. Once done refit the carbon filters and grease filters, then close the glass panels.

Please keep this instruction manual for future reference

Ducted version

Turn the motor to evacuate the air from the upper side of the hood. Open the glass panels, and remove grease filters and carbon filters.

Remove the four screws shown in picture 4. Remove the lower stainless steel as shown in picture 5. Then remove the screws holding the motor, as shown in picture 6. Open the hole in the middle of the upper side hood (fig 7.) Fix the plug to the hole where there was the motor before, using the four screws provided. (fig 9) Install the motor in the upper side by means of the four screws earlier removed (picture 10). Prearrange an air outlet exactly in the middle of the hood. Continue with the installation as Recirculating version (Free standing).

The use of carbon filters is not necessary in this case.

Installation of the air outlet with a joint diameter of 200mm.

Connect the internal motor or the external motor's cable to the terminal board found inside the plastic box of the wiring. Make sure to respect the colors of cables when performing the electrical connection (fig.2.1)

Make the opening for the air outlet diameter of 200mm on the upper side of the product (the opening is already marked on the body of the unit).

Install the joint with a diameter of 200mm supplied with the external motor and fix it with the 8 screws supplied.

The 200mm diameter joint is moved slightly from the longitudinal axis of the product by 25mm.

BUILT-IN INSTALLATION

In case of built-in version remove the stainless steel cover (fig.11)



Ducted version

Mark the holes to fix the product into the false ceiling (Fig.3).

Make the the holes marked, by a drill bit diameter 8mm, and place the metric plugs provided in the holes. In the built-in version it is possible to select the air outlet side.

The product has been assembled with the air outlet of the motor placed on the short side but it is possible to select the side of the cooker hood where the air extracted can be discharged, as follows:

open the glass panels and remove the grease filters and carbon filters.

Unscrew the four screws shown in fig. 4.

Remove the lower stainless steel as shown in picture 5.

Now remove the four screws that fix the motor, shown in picture 6.

Open the hole in the middle of the upper side hood (fig.7) or in the long side (fig. 12). Fix the plug to the hole where there was the motor before, by means of the four screws supplied. (fig. 9)

Install the motor in the upper side or in the long side using the four screws earlier removed (fig.10).

Fix the long screws into the metric plug, install the hood on the ceiling as shown in picture 13.

Please keep this instruction manual for future reference

Make the electrical connection into the metal box.

The power supply metal box is positioned close to the electrical components and you can see them after removing the grease filters.

Please connect the cables as you can see in picture 18.

Ducting is not supplied with the product, this is to be supplied by the installer depending on the installation requirements.

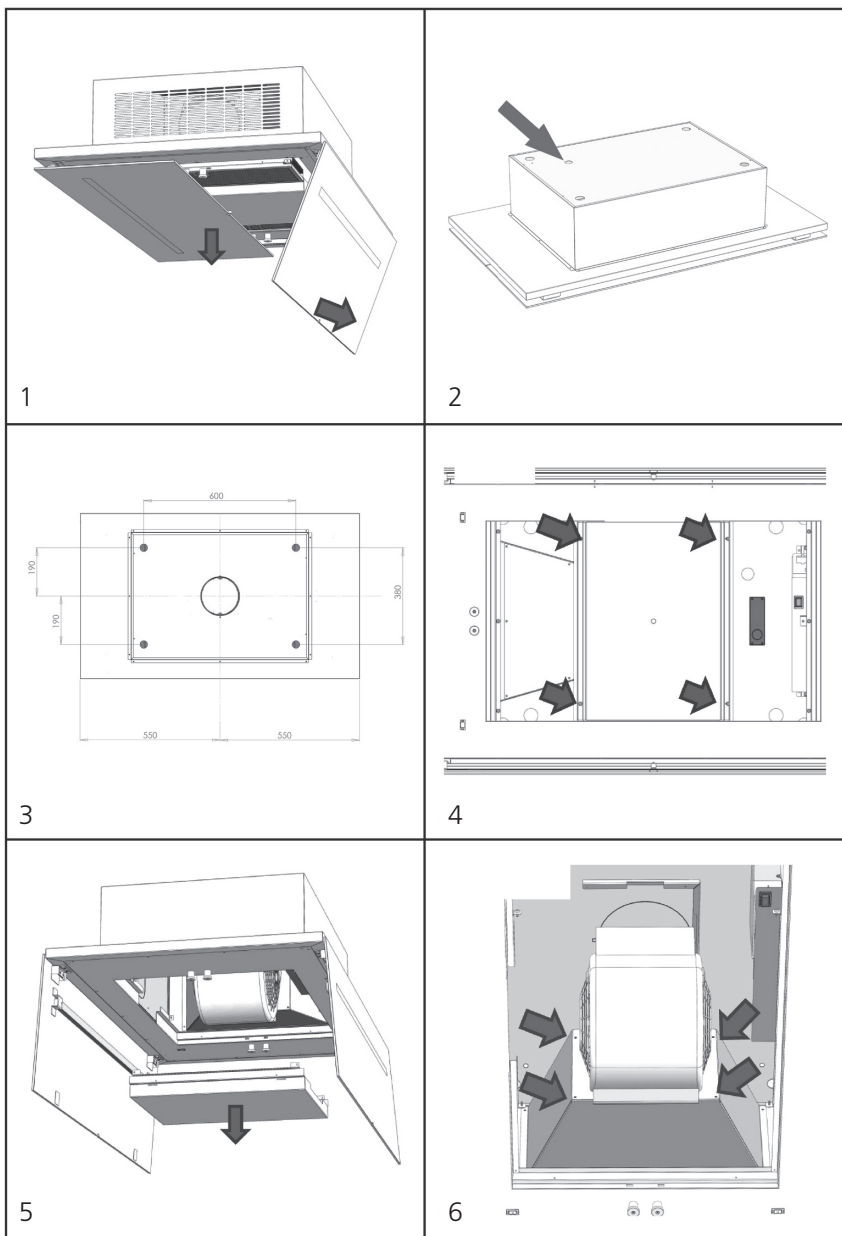
If you have selected the output air from the short side of the hood, it is possible to facilitate the attachment of the tube by removing the cover shown in Fig. 16.

The use of carbon filters is not necessary in this case.

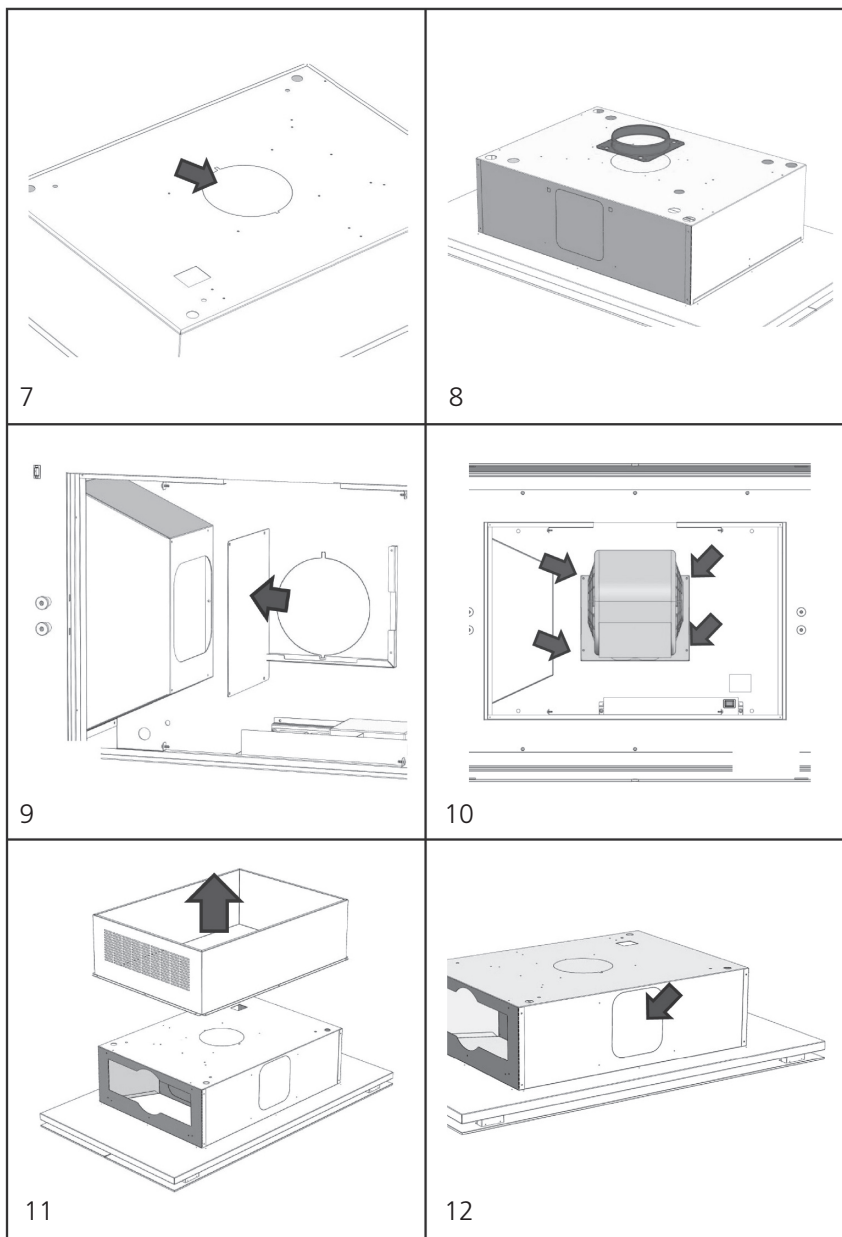
The false ceiling (plasterboard) must remain above the wider part of the hood fig.13. Make a structure able to support the weight of the false ceiling (plasterboard), which must not burden the hood.

Recirculating version

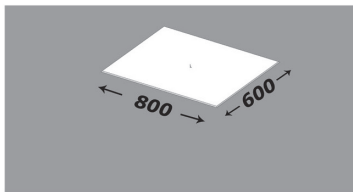
After the installation of the hood as described in the previous chapter, connect a pipe from the motor to the outer part of the niche. Make the electrical connection into the metal box. Refit the grease filters, the carbon filters (fig.17) and close the glass panel.



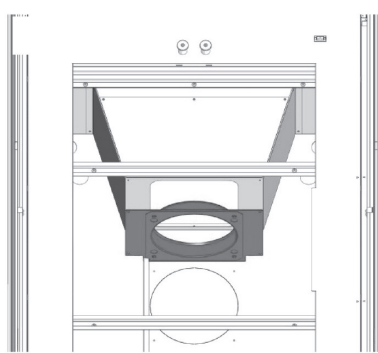
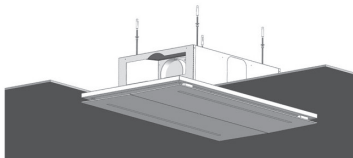
Please keep this instruction manual for future reference



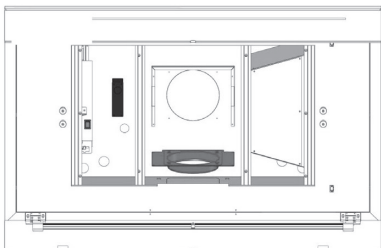
Please keep this instruction manual for future reference



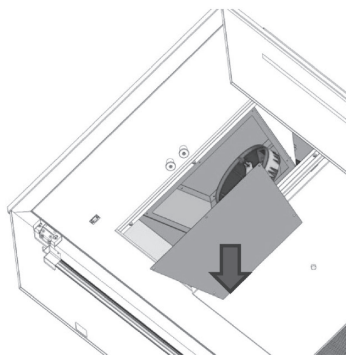
13



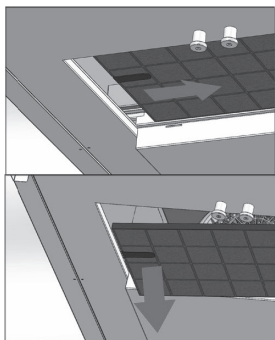
14



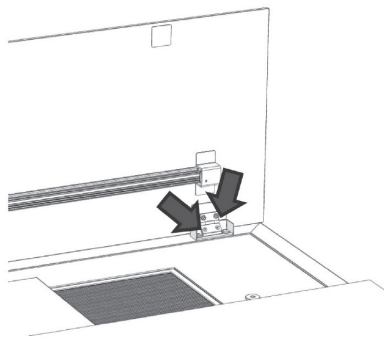
15



16

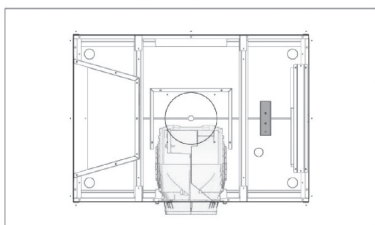


17

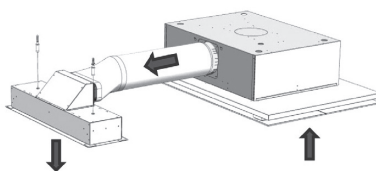


18

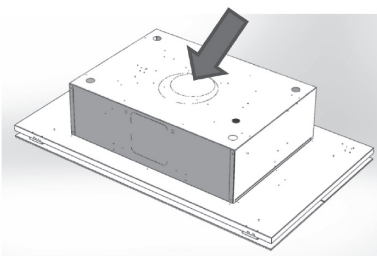
Please keep this instruction manual for future reference



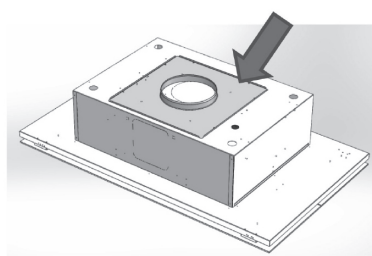
19



20

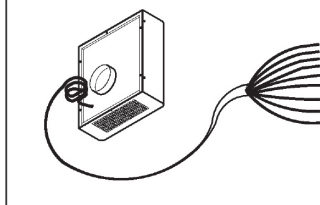


21



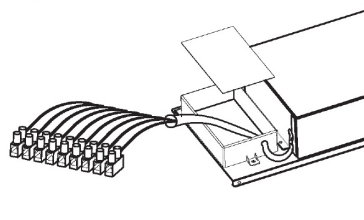
22

Energy label External motor



23

Energy label product in external motor version



REMOTE CONTROL

At first ignition, keep pressed the lighting button for 5 seconds.

Remote control used for the operation of cooker hoods:

Technical Data

Alkaline battery powered :	12 V mod. 23 A
Operating frequency :	433.92 Mhz
Combinations :	32.768
Max. consumption :	25 mA
Operating temperature:	-20 ÷ + 55 °C
Dimensions :	120 x 45 x 15 mm

OPERATING DESCRIPTION

The transmitter is equipped with 5 buttons for cooker hood management, as specified below:



Light ON/OFF command.



Motor ON (speed level 1) / OFF command.



Reduce speed.



Increase speed.



10-minute timer.

The set extraction speed is indicated by the LED in the extraction perimeter channel. To each color generated by the LED, it corresponds a specific speed, as shown below:

First speed WHITE

Second speed BLUE

Third speed DARK BLUE

Fourth speed RED

Initial Operating Condition

The manufacturer supplies the remote control unit ready to be used with codes preset in the Factory

OPERATION MODE

Standard configuration:

Standard configuration requires all “cooker hoods radio control system” to be provided with the same transmission code. In the event two cooker hoods radio control system are installed in the same room or nearby, each system may affect the operation of the another. Therefore, the code of one radio control system must be changed.

Generating a new transmission code:

The radio control system is provided with preset codes. Should new codes be required, proceed as follows: Press simultaneously buttons:



for two seconds. When Leds light on, press buttons:



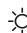
(within 5 seconds). Leds flashing 3 times indicate the procedure is completed.

WARNING:

This operation deletes permanently the preset codes.

Learning the new transmission code:

Once the transmission code is changed in the radio control unit, the electronic central unit of the cooker hood must be made to set the new code in the following way:

Press the main power-off button of the hood and then restore power to the electronic control unit. Within the next 15 seconds, press the Light Button  to synchronise the central unit with the code.

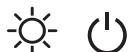


Reset of the Factory configuration:

To restore the Factory configuration, follow the procedure described below: press simultaneously buttons



for 2 seconds. When Leds light on, press buttons



(within 5 seconds). Leds flashing 6 times indicate the procedure is completed.

WARNING:

This operation deletes permanently the preset codes.

Emergency button:

In the event that the radio control does not work, use the emergency button to switch the appliance off.

After any necessary repairs have been performed, reset the emergency button.

WARNING:

The battery should be replaced every year to guarantee the optimal range of the transmitter. To replace the exhausted battery, take the plastic lid off, remove the battery and replace it with a new one, observing the correct battery polarities. Used batteries should be discarded in special collection bins.

WARNING:

Any adjustments or modifications which have not been expressly approved by the holder of the legal conformity certificate may invalidate the user's rights relating to the operation of the device.

The products are endowed with an electronic device which allows the automatic switching off after 4 hours working from the last operation.

TIMING

- As a result of the new EU65 “Energy label” and EU66 “ Ecodesign” regulations issued by the European Commission, which came into force as from January 1st, 2015 , our products have been adapted to comply with these new requirements. All of the models complying with the energy label requirements, are equipped with new electronics including a timer device for extraction speeds control, when the air capacity exceeds 650m³/h. Internal motor models, with maximum air capacity higher than 650m³/h, are equipped with a timer device that automatically switches the extraction speed from 4th to 3rd speed, after 5 minutes operation
- External motor models are equipped with remote motors that , as for internal motor versions, include a timer device that switches down the extraction speed when it exceeds 650 m³/h. (See External Motors Instructions). Remote motors, whose air capacity exceeds 650m³/h at both 4th and 3rd speed, will have the following by default timer control functions:
- The extraction speed is automatically switched from 4th to 2nd speed, after 6 minutes operation. If the appliance is working at 3rd speed, it is automatically switched to 2nd speed, after 7 minutes operation. Operation speeds can also be changed during operation. The energy consumption of the appliance in standby mode is lower than 0.5W.

MAINTENANCE

Correct maintenance helps to ensure optimal performance and a long life. Special care needs to be taken with the grease filter: It should be cleaned on a regular basis to prevent the build up of grease. To access the filter, proceed as described in the panel opening chapter. Remove the grease filter, using the special handle.

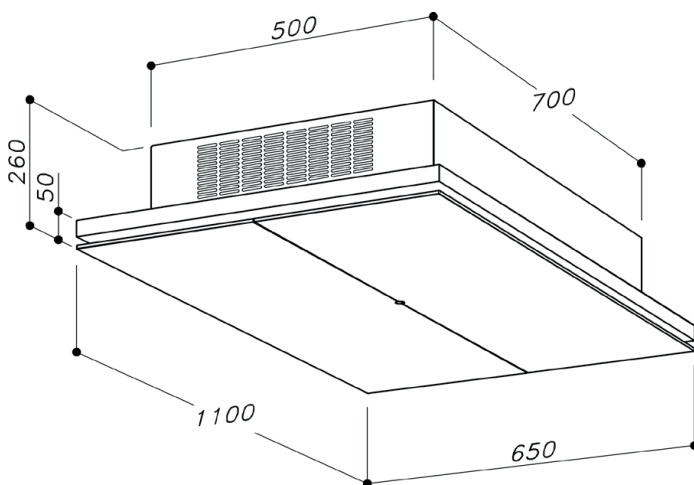
To refit the grease filter after cleaning, carry out the same operation in reverse order. To remove the carbon filter, if fitted, follow the same steps as for the grease filter.

The carbon filter is located immediately above the grease filter. The charcoal filter has to be removed at first giding it inside the location and then rotating it and removing it.

Charcoal filters (CAP64CF) should be replaced at least every 6 months. More with heavy use. These can be purchased from your retailer or directly from Caple at www.caple.co.uk or call sales on 0117 938 1900

Tepid water and neutral detergents are recommended to clean the appliance, any abrasive products should not be used. Once cleaned dry with a soft cloth.

Dimensions



Please keep this instruction manual for future reference

Notes:

Please keep this instruction manual for future reference

Notes:

Please keep this instruction manual for future reference

Caple Service
Fourth Way
Avonmouth
Bristol
BS11 8DW

t: 0117 938 7420
e: service@caple.co.uk
www.caple.co.uk

Contact Caple on 0117 938 7420 or for spare parts www.caple.co.uk