

Product Finish: Chrome / black

Product code: AT1244  
EAN13 barcode: 5060344153522



Note: the image shown may not reflect the product finish, chrome finish is typically depicted.

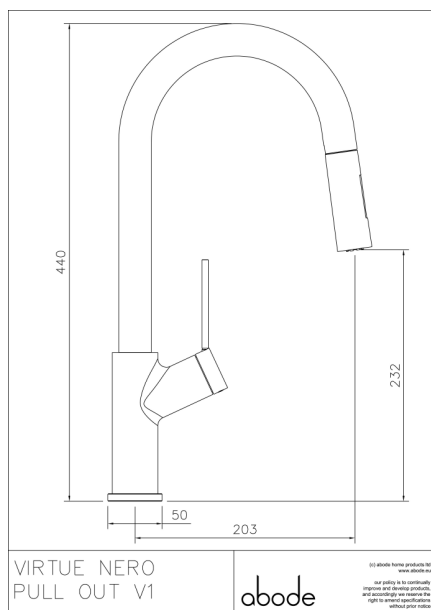
## Product features:

- Metal construction throughout
- Single lever control for effortless single handed control
- Contemporary design with contrasting handle and spout details
- Single spray pattern showerhead
- Supplied complete with flexible tail pipes for fast simple fitting

## Additional information / Parts included:

Includes triangular stabilising bracket, TT Cache key, 2 x hose weights

## Product dimensions:



- **Overall Height / projection:** 440 mm
- **Exit reach:** 203 mm
- **Exit height:** 232 mm
- **Centre distance(s):**

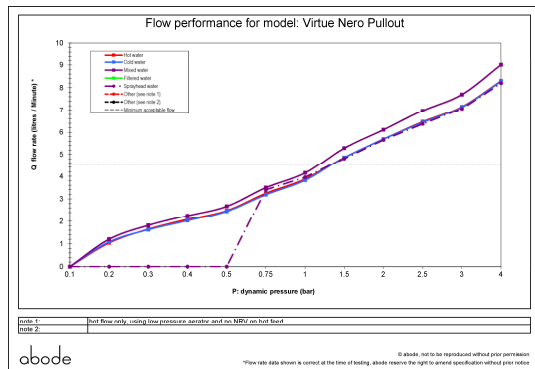
- **Base diameter(s):** 50 mm
- **Recommended hole diameter:** Ø 35 mm
- **Max. surface depth:** 60 mm

- **Spout diameter:** 30 mm
- **Spout aerator size:** 1/2" M

## Packaged properties:

<b>Box length:</b> 640mm	<b>Box depth:</b> 75mm
<b>Box width:</b> 270mm	<b>Units per outer:</b> 5
<b>Tap only weight:</b> 2.18kg	<b>Boxed weight:</b> 3.72kg

## Product flow characteristics:



- **Min / Max water pressure:** 1.50 / 5.5 bar
- **Recommended / Max water temperature:** 46°C / 70°C
- **Part G - Mixed flow rate at 3 bar (litres / min):** 07.70

- **Control valve type:** 35mm single lever ceramic cartridge
- **Product flow characteristics:** Single flow
- **Non return valve(s):** Hot & cold (separate)

- **Aerator type:** Honeycomb & spray
- **Accepts revolve / spray areator:** No
- **Spout connection method:** Grub screw

- **Tail pipe inlet / outlet size:** M8 / 1/2" BSP Female
- **Inlet pipe type / length:** flexible stainless braided hose / 450 mm

## Care instructions summary:

- Clean the mixers and showers regularly as required, using soap, do not use any other cleaners.
- Regular cleaning will prevent the build up of lime scale and dirt
- After cleaning rinse thoroughly with clean water to remove any cleaner residue
- Residues of sink & worktop cleaners can also cause damage, so rinse with clean water after using, avoid contact with any abrasives

## Warranty Summary (Full details available on request):

- Materials and workmanship defects warranted for 5 years
- Valves and working parts warranted for 5 years
- Surface warranty defects warranted for 1 year
- O-rings, hoses & gaskets warranted for 1 year