

Product Finish:

Product code: AT1255/4
EAN13 barcode:



Note: the image shown may not reflect the product finish, chrome finish is typically depicted.

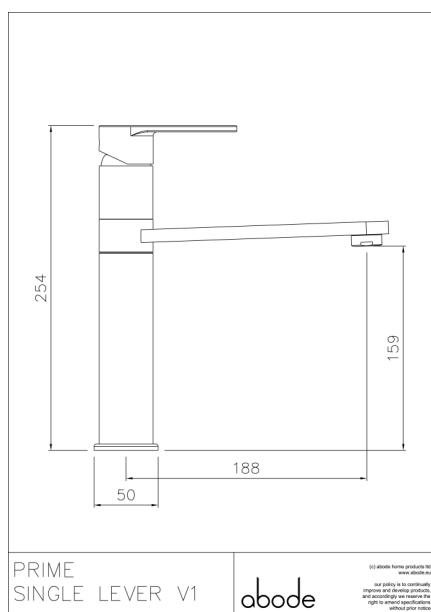
Product features:

- Metal construction throughout
- Subtle soft sweeping design form
- Single lever control for effortless single handed control
- Supplied complete with flexible tail pipes for fast simple fitting
- Antisplash spout supplied as standard

Additional information / Parts included:

Includes triangular stabilising bracket, 1 x 2.0mm A/F Allen key - sco06038 kit

Product dimensions:



- **Overall Height / projection:** 254 mm
- **Exit reach:** 188 mm
- **Exit height:** 159 mm
- **Centre distance(s):**

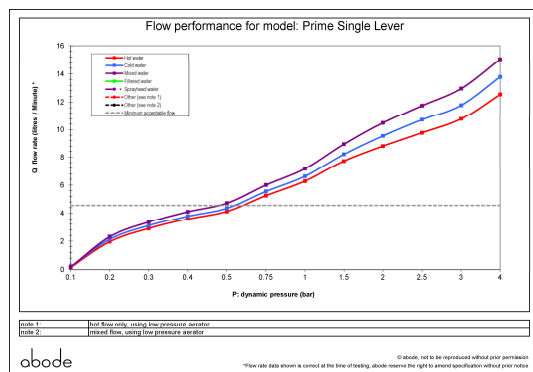
- **Base diameter(s):** 50 mm
- **Recommended hole diameter:** Ø 35 mm
- **Max. surface depth:** 50 mm

- **Spout diameter:** 35 x 10 mm
- **Spout aerator size:** M24x1

Packaged properties:

Box length: 420mm	Box depth: 75mm
Box width: 235mm	Units per outer: 5
Tap only weight: 1.65kg	Boxed weight: 0.99kg

Product flow characteristics:



- **Min / Max water pressure:** 0.50 / 5.5 bar
- **Recommended / Max water temperature:** 46°C / 70°C
- **Part G - Mixed flow rate at 3 bar (litres / min):** 12.96

- **Control valve type:** Single lever ceramic cartridge
- **Product flow characteristics:** Single flow
- **Non return valve(s):** Hot & cold (integral to tails)

- **Aerator type:** Honeycomb aerator
- **Accepts revolve / spray areator:** Yes
- **Spout connection method:** N/a

- **Tail pipe inlet / outlet size:** M10 / 1/2" BSP Male
- **Inlet pipe type / length:** flexible stainless braided hose / 365 mm

Care instructions summary:

- Clean the mixers and showers regularly as required, using soap, do not use any other cleaners.
- Regular cleaning will prevent the build up of lime scale and dirt
- After cleaning rinse thoroughly with clean water to remove any cleaner residue
- Residues of sink & worktop cleaners can also cause damage, so rinse with clean water after using, avoid contact with any abrasives

Warranty Summary (Full details available on request):

- Materials and workmanship defects warranted for 5 years
- Valves and working parts warranted for 5 years
- Surface warranty defects warranted for 1 year
- O-rings, hoses & gaskets warranted for 1 year