



Fitting type: Inset

Sink handing: Reversible

Finish style: Top brushed

- **Min. base unit (bowl, tap & overflow only):** 600 mm
- **Packaged size L x W x D:** 925 x 590 x 270mm
- **Supplied boxed or sleeved:** Boxed
- **Boxed weight:** kg
- **Sink only weight:** 3.80 kg

- Durable 18/10 stainless steel construction throughout
- One a half bowl design for maximum practicality
- Reversible drainer position for maximum flexibility
- Easy clean bowl curves
- Perfect when complimented with the Orbit waste
- Taphole provision to accept Switch filter diverter? Yes, on sink deck

Included parts:



2 x AX1005 (m)
Std BSW



1 x AX1006 (m)
Rectangular overflow pipework



1 x AX1009 (m)
1.5 or 2.0 Bowl pipework



1 x AX4000 (m)
Fitting & care instructions & data sheet
- st/st inset



1 x AX1019 (m)
Inset self adhesive foam sealing strip,
3.0 meters

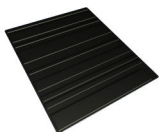


AX1014 (m)
35mm tap hole cover plate - brushed
steel

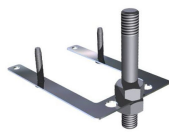


1 x AX1015 (m)
Inset stainless steel fixing clips x 8

Recommended accessories:



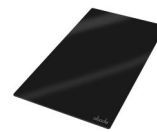
1 x AX2501
Silicone drainer mat 330 x 390mm



1 x AX1011
Tap stabilising bracket



1 x AX3008
Bowl mat 246 x 302 R37



1 x AX2014
Glass Chopping Board 500x280mm
(450) - Black Gloss

All accessories can be purchased directly from www.abode-shop.co.uk or phone 01226 283434

Materials and workmanship warranty summary:

- Sink materials & workmanship 10 years.
- Waste kits 1 year.
- Connecting pipework 1 year.

Care instructions:

- Clean the products regularly using soapy water and a non abrasive cloth, regular cleaning will prevent the build up of lime scale and dirt.
- Avoid contact with corrosive or abrasive substances.
- After cleaning rinse thoroughly with clean water then dry.
- For more detail see supplied booklet or www.abode.eu

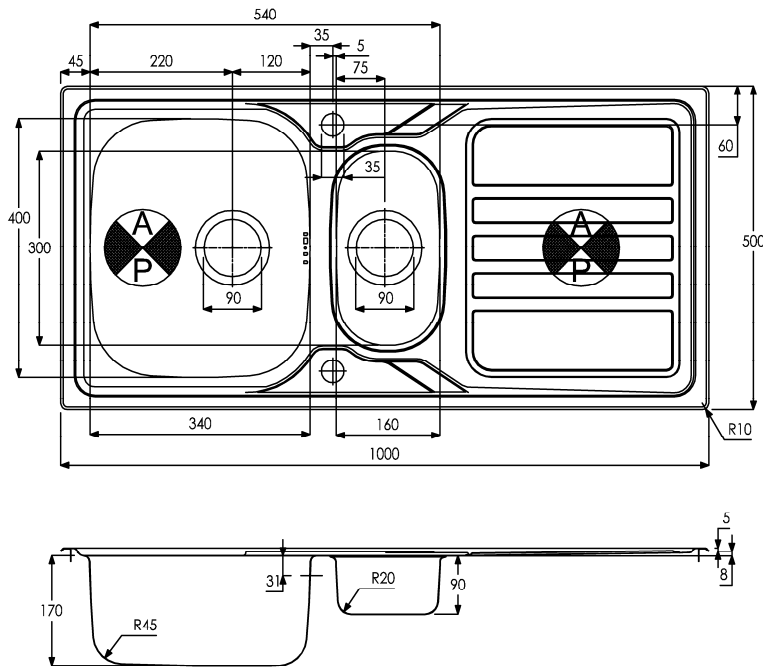
CE EN13310:2003
Domestic kitchen sink made of Stainless steel

Cleanability: Pass
Load resistance: NPD / NA
(applies to wall hung sinks only)
Durability: Pass
For more information see www.abode.eu/ce.html

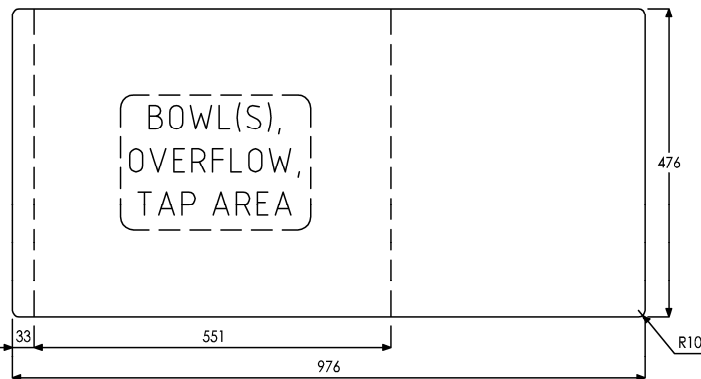
Product dimensions and installation information: note:



symbol indicates position of acoustic pad on stainless products.



INSET CUT OUT



Overall product size: 1000 x 500 x 187 corner radius 10mm

Taphole(s) detail: 2 x Ø 35mm, precut

Compatibility with large square taps: Please check compatibility of some large square base design taps with this sink

Wastehole(s) detail (mm): 90 / 90 / N/A (nb. 90mm wastes accept a waste disposal unit)

Min. base unit (refers to space required for bowl, tap and overflow only): fits 600mm carcass

Min. Recessed fitting width: required (bowl(s), tap and overflow): 551mm

***Worktop cut out size:** 976x476 corner radius 10mm, for .DXF cut files please see www.abode.eu

Min. & Max worktop depth or clip depth reach range: 25 - 45mm

Fitting temple supplied? No, use cut out instructions as supplied

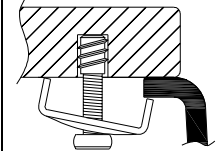
Dishwasher under drainer? Distance from top of worktop to underside of the drainer 8mm

Other: Please check compatibility of some large square base design taps with this sink



***Important, fabricator / installer notes for undermount sinks:**

The cut out size indicated is aligned with outside edge of the bowl top radius (see example below).



You should confirm with your client if the worksurface cutout is to be cut flush, inside or outside this suggested perimeter shape & size.

If you create the cutout smaller or larger than the indicated size then the fit of the accessories may be affected and should be physically checked.

General:

All details are provided in good faith but do not include the tolerances of the material or manufacturing process.

We request that a test cutout is made in scrap timber and checked against the actual sink to be installed before committing to cutting the final worksurface.

Abode can not accept liability for problems or costs incurred by failure to follow this request.

Note: the dimensions on ceramic fireclay products are subject to wider tolerances due to the nature of this natural material and the firing process.

CAD cutout files can be downloaded from www.abode.eu

Bowl details: (sizes in mm unless specified otherwise)

Bowl 1 (typically main bowl):

Bowl 1 size L x W x D (mm): 340 x 400 x 170

Bowl 1 construction: Pressed, 0.70mm

Bowl 1 floor radius (mm): 45

Bowl 1 Wastehole diameter (mm): 90

Bowl 1 overflow: Slotted, barcode pattern

Bowl 1 texture: Unbrushed / satin

Bowl 1 apx. volume (litres): 13.70

Bowl 2 (typically 1/2 or 3/4 bowl):

Bowl 2 size L x W x D (mm): 160 x 300 x 90

Bowl 2 construction: Pressed, 0.70mm

Bowl 2 floor radius (mm): 20

Bowl 2 Wastehole diameter (mm): 90

Bowl 2 overflow: N/A

Bowl 2 texture: Unbrushed / satin

Bowl 2 apx. volume (litres): 3.90

Bowl 3:

Bowl 3 size L x W x D (mm): N/A x N/A x N/A

Bowl 3 construction: N/A, N/Amm

Bowl 3 floor radius (mm): N/A

Bowl 3 Wastehole diameter (mm): N/A

Bowl 3 overflow: N/A

Bowl 3 texture: N/A

Bowl 3 apx. volume (litres): N/A

Important: Please retain this sheet for future use

Product Finish: Chrome

Product code: AT1224
EAN13 barcode: 5060048383942



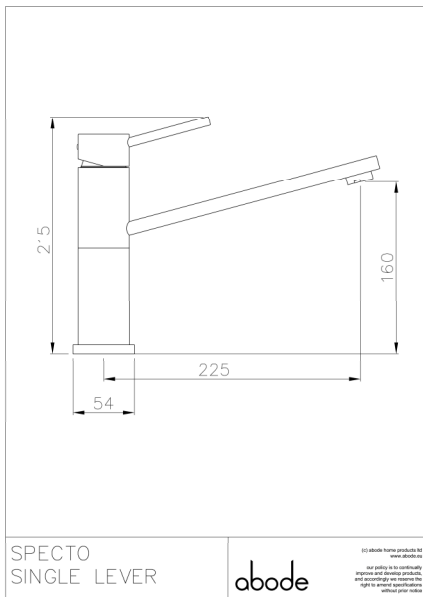
Product features:

- Metal construction throughout
- Subtle soft sweeping design form
- Single lever control for effortless single handed control
- Leading design performance requiring higher pressures
- Antisplash spout supplied as standard

Additional information / Parts included:

1 x fixing stud m8 x 120mm, 1 x worktop seal, 1 x rubber seal, 1 x metal horseshoe, 1 x fixing nut

Product dimensions:



- Overall Height / projection: 215 mm
- Exit reach: 225 mm
- Exit height: 160 mm
- Centre distance(s):

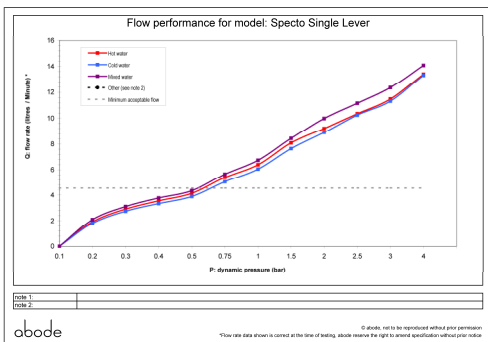
- Base diameter(s): 54 mm
- Recommended hole diameter: Ø 35 mm
- Max. surface depth: 40 mm

- Spout diameter: 35 x 12 mm
- Spout aerator size: 22mm

Packaged properties:

- Box length: 420mm
- Box width: 420mm
- Box depth: 75mm
- Units per outer: 5
- Tap only weight: 1.33kg
- Boxed weight: 1.90kg

Product flow characteristics:



- Min / Max water pressure: 0.60 / 5.5 bar
- Recommended / Max water temperature: 46°C / 70°C
- Part G - Mixed flow rate at 3 bar (litres / min): 12.35

- Control valve type: Single lever ceramic cartridge
- Product flow characteristics: Single flow
- Non return valve(s): Integral to hot & cold inlets

- Aerator type: Neoperl aerator honeycomb single flow
- Accepts revolve / spray areator: Yes
- Spout connection method: Grub screw

- Tail pipe inlet / outlet size: M10 / 1/2" Male
- Inlet pipe type / length: flexible stainless braided hose / 370 mm

Care instructions summary:

- Clean the mixers and showers regularly as required, using soap, do not use any other cleaners.
- Regular cleaning will prevent the build up of lime scale and dirt
- After cleaning rinse thoroughly with clean water to remove any cleaner residue
- Residues of sink & worktop cleaners can also cause damage, so rinse with clean water after using, avoid contact with any abrasives

Warranty Summary (Full details available on request):

- Materials and workmanship defects warranted for 5 years
- Valves and working parts warranted for 5 years
- Surface warranty defects warranted for 1 year
- O-rings, hoses & gaskets warranted for 1 year