



Product features:

- Metal construction throughout
- Thermostatic valve for safety & comfort
- Supplied complete with flexible tail pipes for fast simple fitting
- Part G compliant for thermostatic bath fillers
- Factory set maximum output temperature 46°C (adjustable)

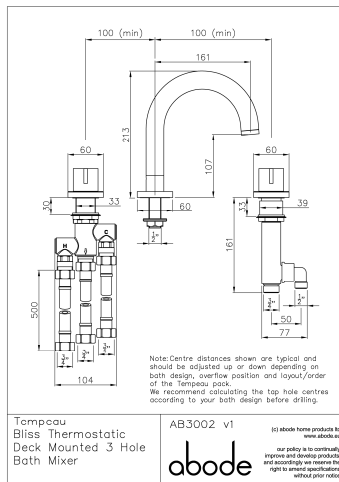
Packaged properties:

Box length: 440 mm **Box depth:** 395 mm
Box width: 255 mm **Boxed weight:** 5.04 kg

Includes pop up waste?: No

Additional comments:

Product dimensions:



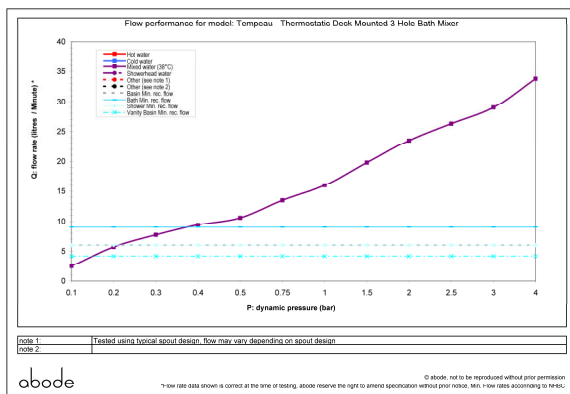
Tempocou
Bliss Thermostatic
Deck Mounted 3 Hole
Bath Mixer

AB3002 v1

(c) abode turns products to
www.abode.eu
our price is to constantly
improve and develop products,
and accordingly we reserve the
right to amend specifications
without prior notice.

- **Overall Height / projection:** 213 mm
- **Exit reach:** 161 mm
- **Exit height:** 107 mm
- **Centre distance(s):** 100, 100 mm
- **Base diameter(s):** 60, 60, 60 mm
- **Product mounted where:** Deck
- **Recommended hole diameter:** 34-40 mm
- **Min. fitting depth required:** n/a mm
- **Max. surface depth:** 30 mm

Product flow characteristics:



- **Min / Max water pressure:** 0.4 / 5.5 bar
- **Part G mixed flow rate at 3 bar (l/m):** 29
- **Max water temperature:** 70° C
- **Product flow characteristics:** Single Flow
- **Aerator type:** Flow Straightener
- **Includes output diverter?:** No
- **Control valve type:** Thermostatic & 3/4 QT CD ()
- **Non return valve position:** H&C Inlet
- **Mesh particle filter size:** 0.60 mm
- **Inlet / outlet size:** 1/2" M & 3/4" M / 1/2" M & 3/4" M
- **Inlet type / length:** Flexi / 500 mm
- **Shower hose type / length:** N/A / N/A

Warranty Summary (Full details available on request):

- Materials and workmanship defects warranted for 5 years
- Valves and working parts warranted for 5 years
- Surface warranty defects warranted for 1 year
- O-rings, hoses & gaskets warranted for 1 year

Care instructions:

- Clean the mixers and showers regularly as required, using soap, do not use any other cleaners.
- Regular cleaning will prevent the build up of lime scale and dirt
- After cleaning rinse thoroughly with clean water to remove any cleaner residue
- Residues of liquid soaps, shampoos and shower foams can also cause damage, so rinse with clean water after using, avoid contact with any abrasives