



**Fitting type:** Inset

**Sink handing:** Reversible

**Finish style:** Black metallic granite

- **Min. base unit (bowl, tap & overflow only):** 600 mm
- **Packaged size L x W x D:** 1050 x 610 x 285mm
- **Supplied boxed or sleeved:** Boxed
- **Boxed weight:** 22.60 kg
- **Sink only weight:** 16.74 kg

- Durable matt finish granite composite construction throughout
- Softened square edges for a sharp but easy clean look
- One a half bowl design for maximum practicality
- Sleek brushed metal 'hidden' orbit overflow design
- Smooth lined luxury Orbit waste supplied as standard
- Taphole provision to accept Switch filter diverter? Yes, on sink deck

## Included parts:



2 x AX1002 (m)  
90mm (1.5") Orbit manual basket  
strainer waste - long bolt



1 x AX1007 (m)  
Round overflow pipework



1 x AX1009 (m)  
1.5 or 2.0 Bowl pipework

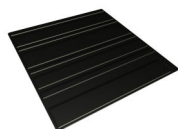


1 x AX4004 (m)  
Fitting & care instructions & data sheet  
- coloured inset

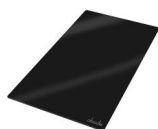


1 x AX1033 (m)  
Composite inset fixing clips x 8

## Recommended accessories:



1 x AX2500  
Silicone drainer mat 320 x 320mm



1 x AX2017  
Glass Chopping Board 500x280mm  
(475) - Black Gloss



1 x AX2502 or AX2503  
High & Dry drainer rack - Green & grey  
or White & grey

All accessories can be  
purchased directly from  
[www.abode-shop.co.uk](http://www.abode-shop.co.uk)  
or phone 01226 283434

### Materials and workmanship warranty summary:

- Sink materials & workmanship 10 years.
- Waste kits 1 year.
- Connecting pipework 1 year.

### Care instructions:

- Clean the products regularly using soapy water and a non abrasive cloth, regular cleaning will prevent the build up of lime scale and dirt.
- Avoid contact with corrosive or abrasive substances.
- After cleaning rinse thoroughly with clean water then dry.
- For more detail see supplied booklet or [www.abode.eu](http://www.abode.eu)



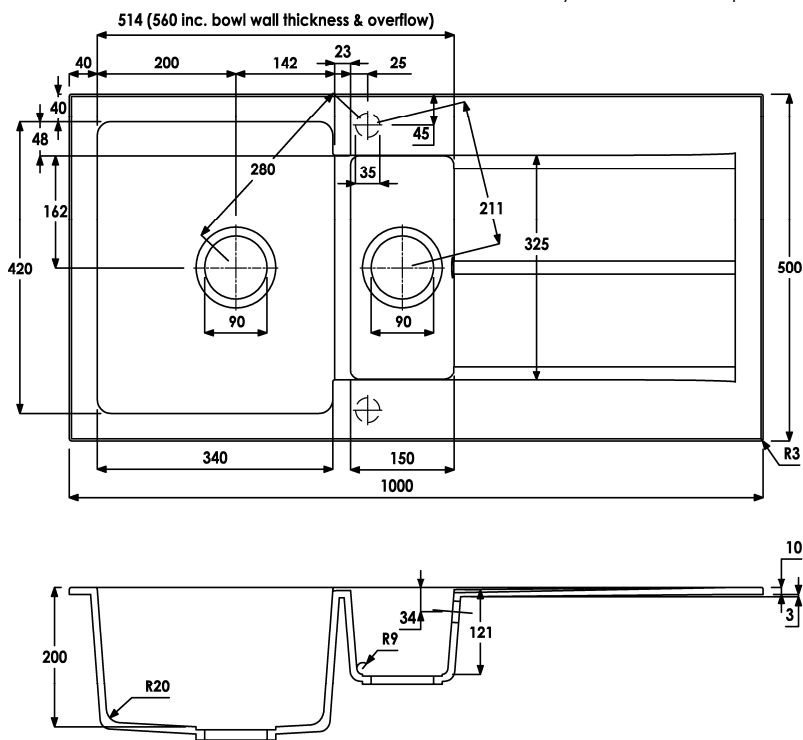
EN13310:2003  
Domestic kitchen sink made of Granite & Acrylic composite

Cleanability: Pass  
Load resistance: NPD / NA  
(applies to wall hung sinks only)  
Durability: Pass  
For more information see [www.abode.eu/ce.html](http://www.abode.eu/ce.html)

## Product dimensions and installation information:



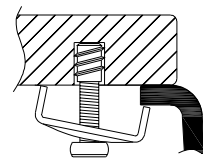
symbol indicates position of acoustic pad on stainless products.



### \*Important, fabricator / installer notes:

#### For undermount sinks:

The cut out size indicated is aligned with outside edge of the bowl top radius (see below).



You should confirm with your client if the worksurface cutout is to be cut flush, inside or outside this suggested perimeter shape & size.

If you create the cutout smaller or larger than the indicated size then the fit of the accessories may be affected and should be physically checked.

#### General:

All details are provided in good faith and within the tolerances of the manufacturing process.

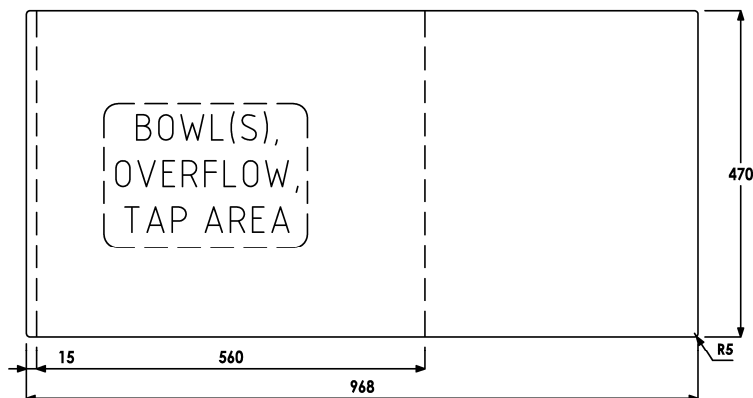
**Note: the dimensions on ceramic fireclay products are subject to wider tolerances due to the nature of this natural material and the firing process.**

We recommend that a test cutout is made in scrap timber and checked against the actual sink supplied before committing to cutting the worksurface.

Abode can not accept liability for problems or costs incurred by failure to follow this advice.

CAD cutout files can be downloaded from [www.abode.eu](http://www.abode.eu)

### INSET CUT OUT



**Overall product size:** 1000 x 500 x 220 corner radius 3mm

**Tap hole(s) detail:** 2 x Ø 35mm, Part drilled for drill guide

**Compatibility with large square taps:** No known incompatibilities

**Wastehole(s) detail (mm):** 90 / 90 / N/A (nb. 90mm wastes accept a waste disposal unit)

**Min. base unit (refers to space required for bowl, tap and overflow only):** fits 600mm carcass

**Min. Recessed fitting width:** required (bowl(s), tap and overflow: 560mm

**\*Worktop cut out size:** 968x470 corner radius 5mm, for .DXF cut files please see [www.abode.eu](http://www.abode.eu)

**Min. & Max worktop depth or clip depth reach range:** 28 - 45mm

**Fitting template supplied?** No, use cut out instructions as supplied

**Dishwasher under drainer?** Distance from top of worktop to underside of the drainer 3mm

**Other:** No known incompatibilities

### Bowl details: (sizes in mm unless specified otherwise)

#### Bowl 1 (typically main bowl):

**Bowl 1 size L x W x D (mm):** 340 x 420 x 200

**Bowl 1 construction:** Moulded, 10.00mm

**Bowl 1 floor radius (mm):** 20

**Bowl 1 Wastehole diameter (mm):** 90

**Bowl 1 overflow:** None

**Bowl 1 texture:** Matt textured

**Bowl 1 apx. volume (litres):** 29.44

#### Bowl 2 (typically ½ or ¾ bowl):

**Bowl 2 size L x W x D (mm):** 150 x 325 x 121

**Bowl 2 construction:** Moulded, 10.00mm

**Bowl 2 floor radius (mm):** 9

**Bowl 2 Wastehole diameter (mm):** 90

**Bowl 2 overflow:** Circular, 30mm diameter

**Bowl 2 texture:** Matt textured

**Bowl 2 apx. volume (litres):** 3.80

#### Bowl 3:

**Bowl 3 size L x W x D (mm):** N/A x N/A x N/A

**Bowl 3 construction:** N/A, N/Amm

**Bowl 3 floor radius (mm):** N/A

**Bowl 3 Wastehole diameter (mm):** N/A

**Bowl 3 overflow:** N/A

**Bowl 3 texture:** N/A

**Bowl 3 apx. volume (litres):** N/A

**Important: Please retain this sheet for future use**