


**Fitting type:** Inset

**Sink handing:** Not handed

**Finish style:** Brushed steel

- **Min. base unit (bowl, tap & overflow only):** 1000 mm
- **Packaged size L x W x D:** 1010 x 610 x 300mm
- **Supplied boxed or sleeved:** Boxed
- **Boxed weight:** 13.80 kg
- **Sink only weight:** 7.14 kg

- Thick gauge 18/10 stainless steel construction throughout
- Practical and durable glass covers add minimalist style
- Softened square edges for a sharp but easy clean look
- Smooth lined luxury Orbit waste supplied as standard
- Deep bowl(s) to accept larger cookware
- Taphole provision to accept Switch filter diverter? No, Fit through worktop

### Included parts:



1 x AX1001 (m)  
90mm (1.5") Orbit manual basket  
strainer waste - short bolt



1 x AX1006 (m)  
Rectangular overflow pipework



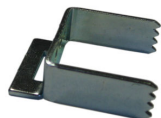
1 x AX1008 (m)  
1.0 Bowl pipework



1 x AX4005 (m)  
Fitting & care instructions & data sheet  
- st/st inset extension tie rod



8 x AX1021 (m)  
Rotating fixing clip



5 x AX1022 (m)  
Fixing clip bridge



4 x AX1034 (m)  
Wall mounted fixing clip

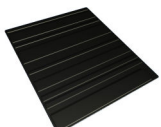


4 x AX1035 (m)  
Extension tie rod

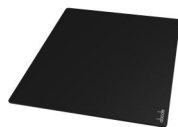


1 x AX1025 (m)  
Stainless steel triangular tap deck  
reinforcer

### Recommended accessories:



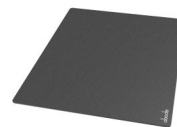
1 x AX2501  
Silicone drainer mat 330 x 390mm



2 x AX2000  
1 x Sink Cover 447x407mm (405) -  
Black Gloss



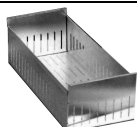
2 x AX2001  
1 x Sink Cover 447x407mm (405) -  
White Gloss



2 x AX2002  
1 x Sink Cover 447x407mm (405) -  
Silver



1 x AX1011  
Tap stabilising bracket



1 x AX1501  
Logik Colander



1 x AX2502 or AX2503  
High & Dry drainer rack - Green & grey  
or White & grey

All accessories can be  
purchased directly from  
[www.abode-shop.co.uk](http://www.abode-shop.co.uk)  
or phone 01226 283434

### Materials and workmanship warranty summary:

- Sink materials & workmanship 10 years.
- Waste kits 1 year.
- Connecting pipework 1 year.

### Care instructions:

- Clean the products regularly using soapy water and a non abrasive cloth, regular cleaning will prevent the build up of lime scale and dirt.
- Avoid contact with corrosive or abrasive substances.
- After cleaning rinse thoroughly with clean water then dry.
- For more detail see supplied booklet or [www.abode.eu](http://www.abode.eu)



EN13310:2003

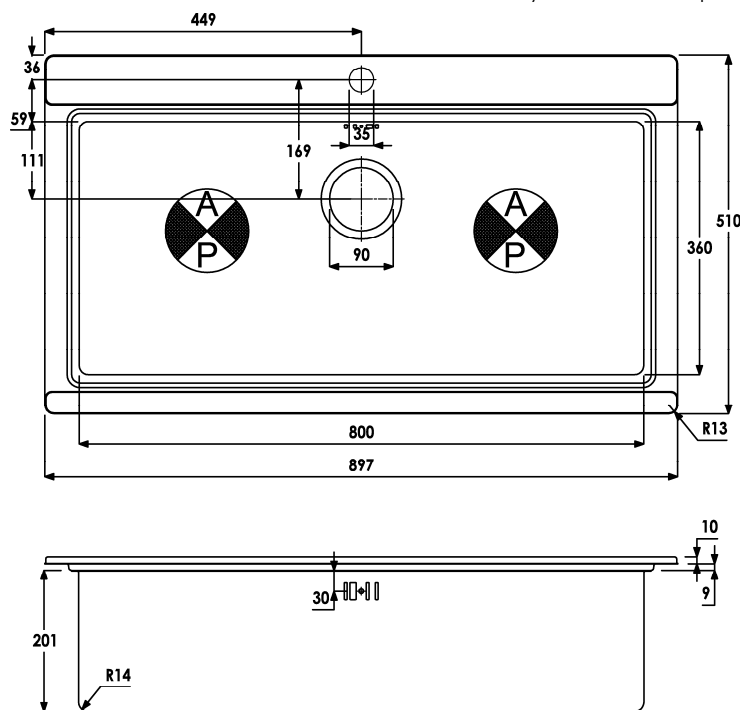
Domestic Kitchen sink made of Stainless steel

Cleanability: Pass  
Load resistance: NPD / NA  
(applies to wall hung sinks only)  
Durability: Pass  
For more information see [www.abode.eu/ce.html](http://www.abode.eu/ce.html)

## Product dimensions and installation information:



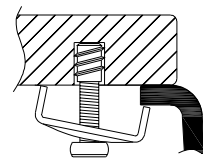
note: symbol indicates position of acoustic pad on stainless products.



### \*Important, fabricator / installer notes:

#### For undermount sinks:

The cut out size indicated is aligned with outside edge of the bowl top radius (see below).



You should confirm with your client if the worksurface cutout is to be cut flush, inside or outside this suggested perimeter shape & size.

If you create the cutout smaller or larger than the indicated size then the fit of the accessories may be affected and should be physically checked.

#### General:

All details are provided in good faith and within the tolerances of the manufacturing process.

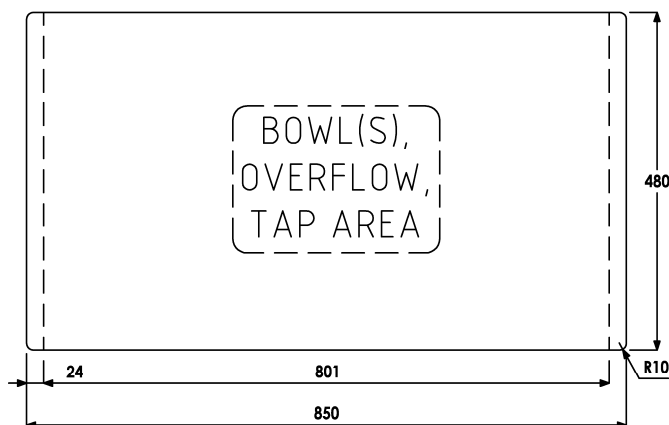
**Note: the dimensions on ceramic fireclay products are subject to wider tolerances due to the nature of this natural material and the firing process.**

We recommend that a test cutout is made in scrap timber and checked against the actual sink supplied before committing to cutting the worksurface.

Abode can not accept liability for problems or costs incurred by failure to follow this advice.

CAD cutout files can be downloaded from [www.abode.eu](http://www.abode.eu)

### INSET CUT OUT



**Overall product size:** 897 x 510 x 220 corner radius 13mm

**Tap hole(s) detail:** 1 x Ø 35mm, precut

**Compatibility with large square taps:** No known incompatibilities

**Waste hole(s) detail (mm):** 90 / N/A / N/A (nb. 90mm wastes accept a waste disposal unit)

**Min. base unit (refers to space required for bowl, tap and overflow only):** fits 1000mm carcass

**Min. Recessed fitting width:** required (bowl(s), tap and overflow: 800mm

**\*Worktop cut out size:** 850x480 corner radius 10mm, for .DXF cut files please see [www.abode.eu](http://www.abode.eu)

**Min. & Max worktop depth or clip depth reach range:** 26 - 45mm

**Fitting template supplied?** No, use cut out instructions as supplied

**Dishwasher under drainer?** Distance from top of worktop to underside of the drainer 9mm

**Other:** No known incompatibilities

### Bowl details: (sizes in mm unless specified otherwise)

#### Bowl 1 (typically main bowl):

**Bowl 1 size L x W x D (mm):** 800 x 360 x 201

**Bowl 1 construction:** Welded, 1.00mm

**Bowl 1 floor radius (mm):** 14

**Bowl 1 Wastehole diameter (mm):** 90

**Bowl 1 overflow:** Slotted, barcode pattern

**Bowl 1 texture:** Brushed stainless

**Bowl 1 apx. volume (litres):** 49.40

#### Bowl 2 (typically ½ or ¾ bowl):

**Bowl 2 size L x W x D (mm):** N/A x N/A x N/A

**Bowl 2 construction:** N/A, N/Amm

**Bowl 2 floor radius (mm):** N/A

**Bowl 2 Wastehole diameter (mm):** N/A

**Bowl 2 overflow:** N/A

**Bowl 2 texture:** N/A

**Bowl 2 apx. volume (litres):** N/A

#### Bowl 3:

**Bowl 3 size L x W x D (mm):** N/A x N/A x N/A

**Bowl 3 construction:** N/A, N/Amm

**Bowl 3 floor radius (mm):** N/A

**Bowl 3 Wastehole diameter (mm):** N/A

**Bowl 3 overflow:** N/A

**Bowl 3 texture:** N/A

**Bowl 3 apx. volume (litres):** N/A

**Important: Please retain this sheet for future use**