



Fitting type: Inset

Sink handing: Reversible

Finish style: Brushed steel

- **Min. base unit (bowl, tap & overflow only):** 600 mm
- **Packaged size L x W x D:** 1060 x 585 x 270mm
- **Supplied boxed or sleeved:** Sleeved and boxed
- **Boxed weight:** 9.30 kg
- **Sink only weight:** 5.32 kg

- Softened square edges for a sharp but easy clean look
- Heavy brushed steel texture
- One a half bowl design for maximum practicality
- Durable stainless steel construction throughout
- Reversible drainer position for maximum flexibility
- Taphole provision to accept Switch filter diverter? Yes, on sink deck

Included parts:



1 x AX1012 (a)
90mm Orbit wastes & rectangular
overflow pack for 1.5 & 2.0 - short
bolt



1 x AX1009 (a)
1.5 or 2.0 Bowl pipework



1 x AX4000 (a)
Fitting & care instructions & data sheet
- st/st inset



1 x AX1027 (m/l)
Inset stainless steel fixing clips x 8

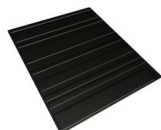


1 x AX1028 (m/l)
Inset self adhesive foam sealing strip,
3.5 meters

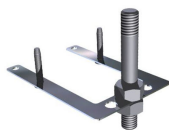


1 x AX1014 (a)
35mm tap hole cover plate - brushed
steel

Recommended accessories:



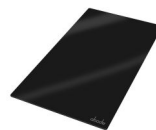
1 x AX2501
Silicone drainer mat 330 x 390mm



1 x AX1011
Tap stabilising bracket



1 x AX3011
Bowl mat 274 x 334 R5



1 x AX2013
Glass Chopping Board 500x280mm
(457) - Black Gloss



1 x AX2502 or AX2503
High & Dry drainer rack - Green & grey
or White & grey

All accessories can be
purchased directly from
www.abode-shop.co.uk
or phone 01226 283434

Materials and workmanship warranty summary:

- Sink materials & workmanship 10 years.
- Waste kits 1 year.
- Connecting pipework 1 year.

Care instructions:

- Clean the products regularly using soapy water and a non abrasive cloth, regular cleaning will prevent the build up of lime scale and dirt.
- Avoid contact with corrosive or abrasive substances.
- After cleaning rinse thoroughly with clean water then dry.
- For more detail see supplied booklet or www.abode.eu



EN13310:2003

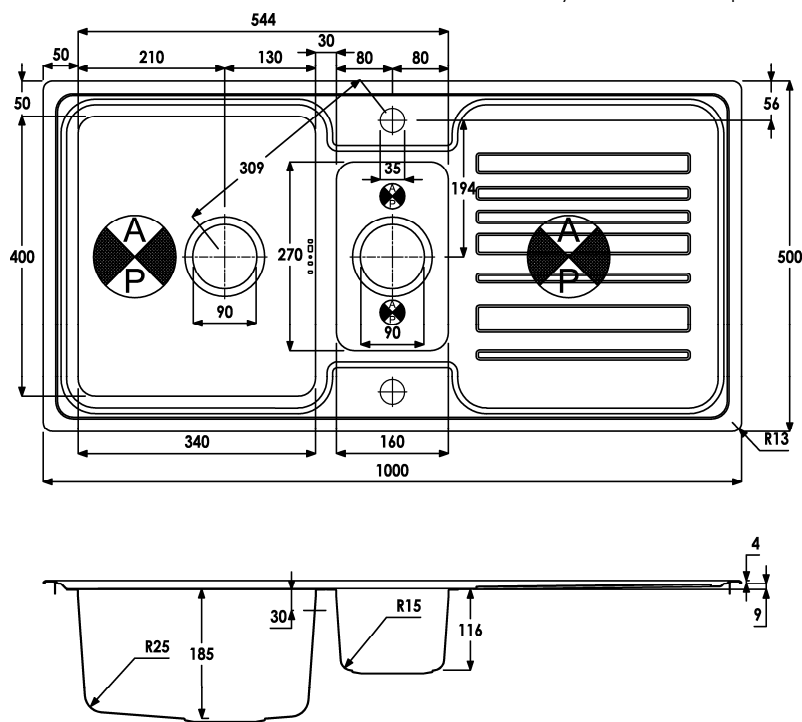
Domestic kitchen sink made of Stainless steel

Cleanability: Pass
Load resistance: NPD / NA
(applies to wall hung sinks only)
Durability: Pass
For more information see www.abode.eu/ce.html

Product dimensions and installation information:



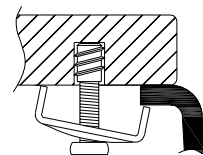
symbol indicates position of acoustic pad on stainless products.



*Important, fabricator / installer notes:

For undermount sinks:

The cut out size indicated is aligned with outside edge of the bowl top radius (see below).



You should confirm with your client if the worksurface cutout is to be cut flush, inside or outside this suggested perimeter shape & size.

If you create the cutout smaller or larger than the indicated size then the fit of the accessories may be affected and should be physically checked.

General:

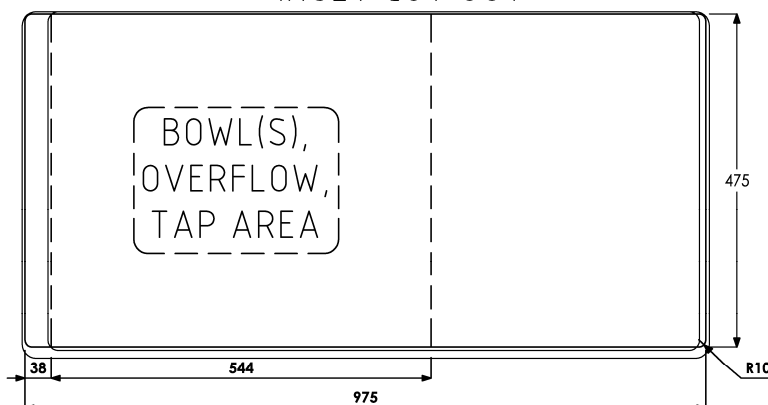
All details are provided in good faith and within the tolerances of the manufacturing process.
Note: the dimensions on ceramic fireclay products are subject to wider tolerances due to the nature of this natural material and the firing process.

We recommend that a test cutout is made in scrap timber and checked against the actual sink supplied before committing to cutting the worksurface.

Abode can not accept liability for problems or costs incurred by failure to follow this advice.

CAD cutout files can be downloaded from www.abode.eu

INSET CUT OUT



Overall product size: 1000 x 500 x 196 corner radius 13mm

Tap hole(s) detail: 2 x Ø 35mm, precut

Compatibility with large square taps: No known incompatibilities

Wastehole(s) detail (mm): 90 / 90 / N/A (nb. 90mm wastes accept a waste disposal unit)

Min. base unit (refers to space required for bowl, tap and overflow only): fits 600mm carcass

Min. Recessed fitting width: required (bowl(s), tap and overflow: 544mm

***Worktop cut out size:** 975x475 corner radius 10mm, for .DXF cut files please see www.abode.eu

Min. & Max worktop depth or clip depth reach range: 30 - 50mm

Fitting template supplied? No, use cut out instructions as supplied

Dishwasher under drainer? Distance from top of worktop to underside of the drainer 9mm

Other: No known incompatibilities

Bowl details: (sizes in mm unless specified otherwise)

Bowl 1 (typically main bowl):

Bowl 1 size L x W x D (mm): 340 x 400 x 185

Bowl 1 construction: Pressed, 0.80mm

Bowl 1 floor radius (mm): 25

Bowl 1 Wastehole diameter (mm): 90

Bowl 1 overflow: Slotted, barcode pattern

Bowl 1 texture: Brushed stainless

Bowl 1 apx. volume (litres): 19.20

Bowl 2 (typically ½ or ¼ bowl):

Bowl 2 size L x W x D (mm): 160 x 270 x 116

Bowl 2 construction: Pressed, 0.80mm

Bowl 2 floor radius (mm): 15

Bowl 2 Wastehole diameter (mm): 90

Bowl 2 overflow: N/A

Bowl 2 texture: Brushed stainless

Bowl 2 apx. volume (litres): 4.20

Bowl 3:

Bowl 3 size L x W x D (mm): N/A x N/A x N/A

Bowl 3 construction: N/A, N/Amm

Bowl 3 floor radius (mm): N/A

Bowl 3 Wastehole diameter (mm): N/A

Bowl 3 overflow: N/A

Bowl 3 texture: N/A

Bowl 3 apx. volume (litres): N/A

Important: Please retain this sheet for future use