

Product features:



- Metal & ABS construction
- Thermostatic valve for safety & comfort
- 2 exit independent control for output to 2 x shower or 1 x shower & 1 x bath
- Minimalist planate design form
- 5 year limited warranty

Packaged properties:

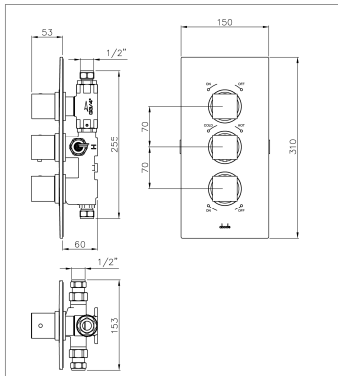
Box length: 300 mm **Box depth:** 160 mm
Box width: 235 mm **Boxed weight:** 3.50 kg

Includes pop up waste?: No

Additional comments:

Includes 2.5mm allen key, optional removable mesh filters and flow limiters (7 l/min)

Product dimensions:



Zeal
thermostatic 2 exit
(independent)
concealed shower

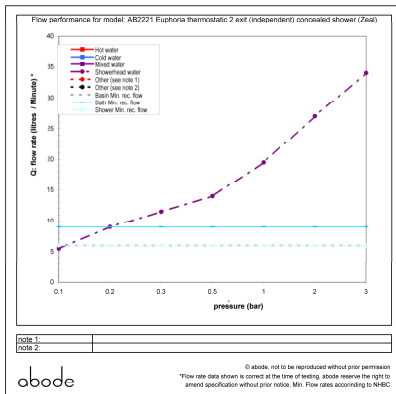
AB2221 v1

abode

© abode home products ltd
www.abode.eu
Our policy is to continually
improve and develop products,
and accordingly we reserve the
right to amend specifications
without prior notice.

- **Overall Height / projection:** 53 mm
- **Exit reach:** N/A mm
- **Exit height:** N/A mm
- **Centre distance(s):** N/A mm
- **Base diameter(s):** 150 x 310 mm
- **Product mounted where:** Wall
- **Recommended hole diameter:** 155 x 255 x 60 mm
- **Min. fitting depth required:** 55-65 mm
- **Max. surface depth:** N/A mm

Product flow characteristics:



- **Min / Max water pressure:** 0.2 / 5 bar
- **Part G mixed flow rate at 3 bar (l/m):** 34
- **Max water temperature:** 70° C
- **Product flow characteristics:** N/A
- **Aerator type:** N/A
- **Includes output diverter?:** No
- **Control valve type:** Thermostatic (new plastic type)
- **Non return valve position:** h&c inlet
- **Mesh particle filter size:** 0.6 (3/4" gasket)
- **Inlet / outlet size:** 1/2" M / 1/2" M
- **Inlet type / length:** Fixed / N/A mm
- **Shower hose type / length:** N/A / N/A

Warranty Summary (Full details available on request):

- Materials and workmanship defects warranted for 5 years
- Valves and working parts warranted for 5 years
- Surface warranty defects warranted for 1 year
- O-rings, hoses & gaskets warranted for 1 year

Care instructions:

- Clean the mixers and showers regularly as required, using soap, do not use any other cleaners.
- Regular cleaning will prevent the build up of lime scale and dirt
- After cleaning rinse thoroughly with clean water to remove any cleaner residue
- Residues of liquid soaps, shampoos and shower foams can also cause damage, so rinse with clean water after using, avoid contact with any abrasives