



Fitting type: Inset

Sink handing: Right hand drainer

Finish style: Brushed steel

- **Min. base unit (bowl, tap & overflow only):** 600 mm
- **Packaged size L x W x D:** 1050 x 560 x 260mm
- **Supplied boxed or sleeved:** Boxed
- **Boxed weight:** 12.48 kg
- **Sink only weight:** 8.18 kg

- Thick gauge 18/10 stainless steel construction throughout
- Softened square edges for a sharp but easy clean look
- One a half bowl design for maximum practicality
- Offset half bowl and tap deck for rinse, wash, drain simplicity
- Perfect to be complimented with silicone drainer mat
- Taphole provision to accept Switch filter diverter? No, Fit through worktop

Included parts:



1 x AX1012 (m)
90mm Orbit wastes & rectangular overflow pack for 1.5 & 2.0 - short bolt



1 x AX1009 (m)
1.5 or 2.0 Bowl pipework



1 x AX4000 (m)
Fitting & care instructions & data sheet - st/st inset

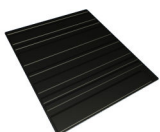


1 x AX1016 (m)
Inset stainless steel fixing clips x 10

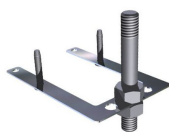


1 x AX1020 (m)
Inset self adhesive foam sealing strip, 3.5 meters

Recommended accessories:



AX2501
Silicone drainer mat 330 x 390mm



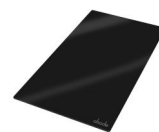
1 x AX1011
Tap stabilising bracket



1 x AX1503
Theorem Colander



1 x AX3006
Bowl mat 316 x 376 R5



1 x AX2019
Glass Chopping Board 500x280mm (465) - Black Gloss



1 x AX2502 or AX2503
High & Dry drainer rack - Green & grey or White & grey

All accessories can be purchased directly from www.abode-shop.co.uk or phone 01226 283434

Materials and workmanship warranty summary:

- Sink materials & workmanship 10 years.
- Waste kits 1 year.
- Connecting pipework 1 year.

Care instructions:

- Clean the products regularly using soapy water and a non abrasive cloth, regular cleaning will prevent the build up of lime scale and dirt.
- Avoid contact with corrosive or abrasive substances.
- After cleaning rinse thoroughly with clean water then dry.
- For more detail see supplied booklet or www.abode.eu



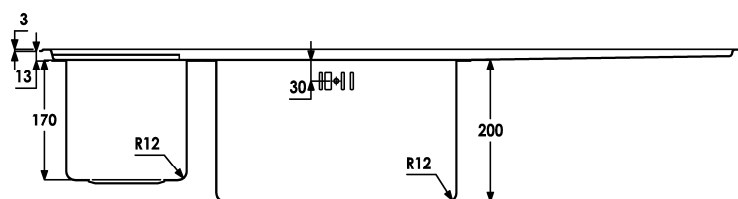
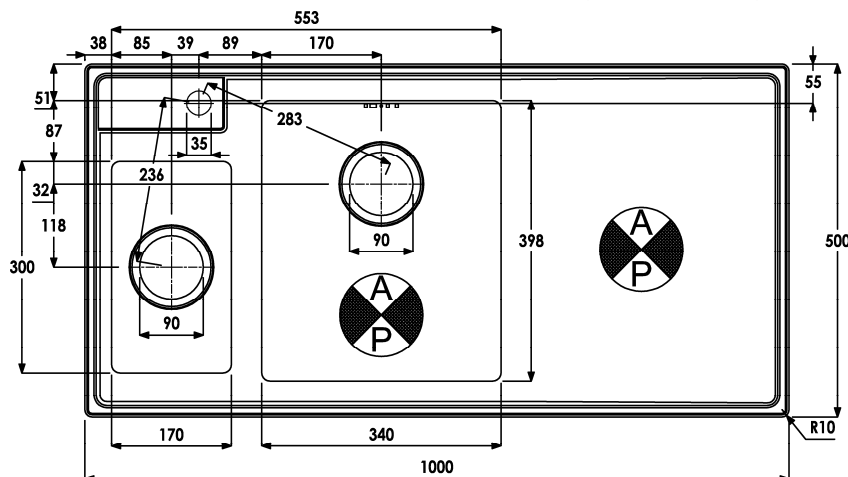
EN13310:2003
Domestic kitchen sink made of Stainless steel

Cleanability: Pass
Load resistance: NPD / NA (applies to wall hung sinks only)
Durability: Pass
For more information see www.abode.eu/ce.html

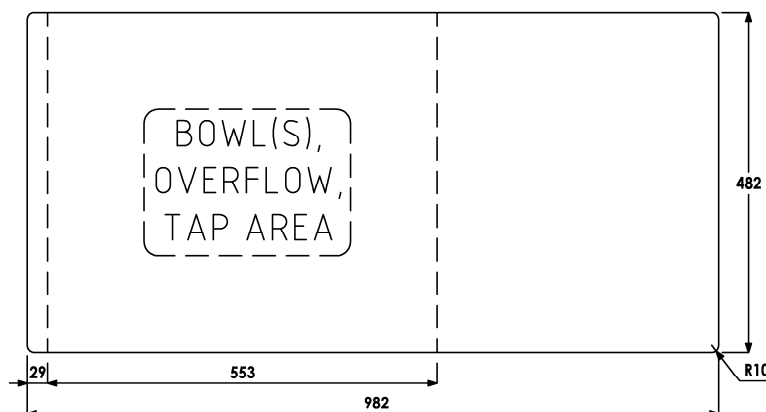
Product dimensions and installation information:



symbol indicates position of acoustic pad on stainless products.



INSET CUT OUT



Overall product size: 1000 x 500 x 220 corner radius 10mm

Taphole(s) detail: 1 x Ø 35mm, precut

Compatibility with large square taps: No known incompatibilities

Wastehole(s) detail (mm): 90 / 90 / N/A (nb. 90mm wastes accept a waste disposal unit)

Min. base unit (refers to space required for bowl, tap and overflow only): fits 600mm carcass

Min. Recessed fitting width: required (bowl(s), tap and overflow: 553mm

***Worktop cut out size:** 982x482 corner radius 10mm, for .DXF cut files please see www.abode.eu

Min. & Max worktop depth or clip depth reach range: 23 - 53mm

Fitting template supplied? No, use cut out instructions as supplied

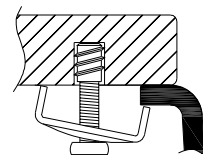
Dishwasher under drainer? Distance from top of worktop to underside of the drainer 13mm

Other: No known incompatibilities

*Important, fabricator / installer notes:

For undermount sinks:

The cut out size indicated is aligned with outside edge of the bowl top radius (see below).



You should confirm with your client if the worksurface cutout is to be cut flush, inside or outside this suggested perimeter shape & size.

If you create the cutout smaller or larger than the indicated size then the fit of the accessories may be affected and should be physically checked.

General:

All details are provided in good faith and within the tolerances of the manufacturing process.

Note: the dimensions on ceramic fireclay products are subject to wider tolerances due to the nature of this natural material and the firing process.

We recommend that a test cutout is made in scrap timber and checked against the actual sink supplied before committing to cutting the worksurface.

Abode can not accept liability for problems or costs incurred by failure to follow this advice.

CAD cutout files can be downloaded from www.abode.eu

Bowl details: (sizes in mm unless specified otherwise)

Bowl 1 (typically main bowl):

Bowl 1 size L x W x D (mm): 340 x 398 x 200

Bowl 1 construction: Pressed, 1.00mm

Bowl 1 floor radius (mm): 12

Bowl 1 Wastehole diameter (mm): 90

Bowl 1 overflow: Slotted, barcode pattern

Bowl 1 texture: Brushed stainless

Bowl 1 apx. volume (litres): 21.60

Bowl 2 (typically ½ or ¼ bowl):

Bowl 2 size L x W x D (mm): 170 x 300 x 170

Bowl 2 construction: Pressed, 1.00mm

Bowl 2 floor radius (mm): 12

Bowl 2 Wastehole diameter (mm): 90

Bowl 2 overflow: N/A

Bowl 2 texture: Brushed stainless

Bowl 2 apx. volume (litres): 8.60

Bowl 3:

Bowl 3 size L x W x D (mm): N/A x N/A x N/A

Bowl 3 construction: N/A, N/Amm

Bowl 3 floor radius (mm): N/A

Bowl 3 Wastehole diameter (mm): N/A

Bowl 3 overflow: N/A

Bowl 3 texture: N/A

Bowl 3 apx. volume (litres): N/A

Important: Please retain this sheet for future use