



**Fitting type:** Undermount or Inset

**Sink handing:** Not handed

**Finish style:** White glaze

- **Min. base unit (bowl, tap & overflow only):** 800 mm
- **Packaged size L x W x D:** 710 x 615 x 350mm
- **Supplied boxed or sleeved:** Boxed
- **Boxed weight:** 43.44 kg
- **Sink only weight:** 39.42 kg

- Durable finest grade fireclay construction throughout
- Hand finished quality
- Model can be undermounted or inset fitted
- Deep bowl(s) to accept larger cookware
- Smooth lined luxury Orbit waste supplied as standard
- Taphole provision to accept Switch filter diverter? No, Fit through worktop

## Included parts:



1 x AX1002 (m)  
90mm (1.5") Orbit manual basket  
strainer waste - long bolt



1 x AX1007 (m)  
Round overflow pipework



1 x AX1008 (m)  
1.0 Bowl pipework

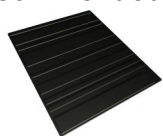


1 x AX4003 (m)  
Fitting & care instructions & data sheet  
- ceramic undermount



1 x AX4002 (m)  
Fitting & care instructions & data sheet  
- ceramic inset

## Recommended accessories:



1 x AX2501  
Silicone drainer mat 330 x 390mm



1 x AX2502 or AX2503  
High & Dry drainer rack - Green & grey  
or White & grey

All accessories can be  
purchased directly from  
[www.abode-shop.co.uk](http://www.abode-shop.co.uk)  
or phone 01226 283434

### Materials and workmanship warranty summary:

- Sink materials & workmanship 10 years.
- Waste kits 1 year.
- Connecting pipework 1 year.

### Care instructions:

- Clean the products regularly using soapy water and a non abrasive cloth, regular cleaning will prevent the build up of lime scale and dirt.
- Avoid contact with corrosive or abrasive substances.
- After cleaning rinse thoroughly with clean water then dry.
- For more detail see supplied booklet or [www.abode.eu](http://www.abode.eu)



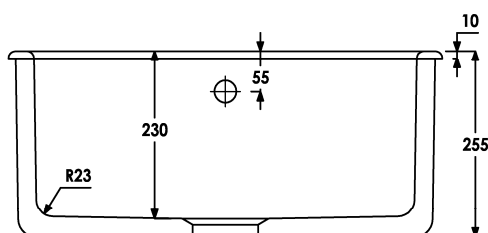
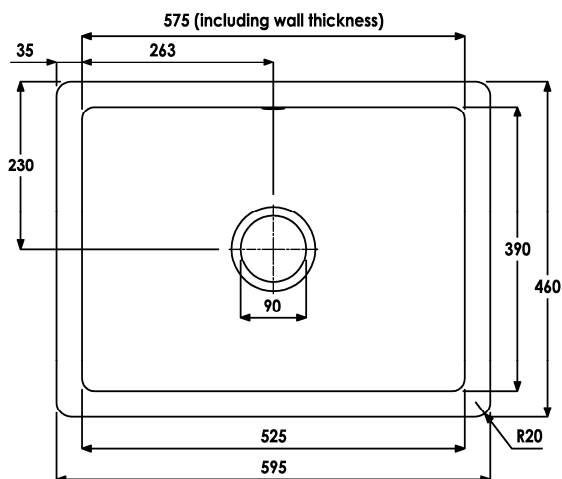
EN13310:2003  
Domestic kitchen sink made of Fireclay ceramic

Cleanability: Pass  
Load resistance: NPD / NA  
(applies to wall hung sinks only)  
Durability: Pass  
For more information see [www.abode.eu/ce.html](http://www.abode.eu/ce.html)

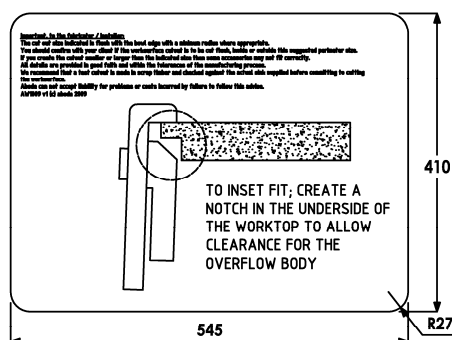
## Product dimensions and installation information: note:



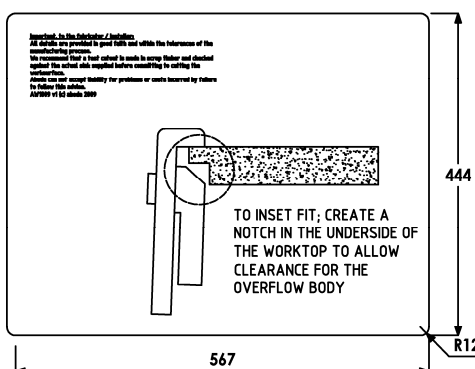
symbol indicates position of acoustic pad on stainless products.



### UNDERMOUNT CUT OUT



### INSET CUT OUT



Overall product size: 595 x 460 x 255 corner radius 20mm

Taphole(s) detail: None

Compatibility with large square taps: No known incompatibilities

Wastehole(s) detail (mm): 90 / N/A / N/A (nb. 90mm wastes accept a waste disposal unit)

Min. base unit (refers to space required for bowl, tap and overflow only): fits 800mm carcass

Min. Recessed fitting width: required (bowl(s), tap and overflow: 575mm

\*Worktop cut out size: 0x0 corner radius 0mm, for .DXF cut files please see [www.abode.eu](http://www.abode.eu)

Min. & Max worktop depth or clip depth reach range: 0 - 0mm

Fitting template supplied? No, use cut out instructions as supplied

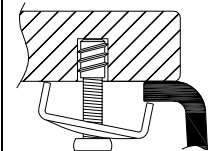
Dishwasher under drainer? Distance from top of worktop to underside of the drainer 0mm

Other: No known incompatibilities



### \*Important, fabricator / installer notes for undermount sinks:

The cut out size indicated is aligned with outside edge of the bowl top radius (see example below).



You should confirm with your client if the worksurface cutout is to be cut flush, inside or outside this suggested perimeter shape & size.

If you create the cutout smaller or larger than the indicated size then the fit of the accessories may be affected and should be physically checked.

### General:

All details are provided in good faith but do not include the tolerances of the material or manufacturing process.

We request that a test cutout is made in scrap timber and checked against the actual sink to be installed before committing to cutting the final worksurface.

Abode can not accept liability for problems or costs incurred by failure to follow this request.

Note: the dimensions on ceramic fireclay products are subject to wider tolerances due to the nature of this natural material and the firing process.

CAD cutout files can be downloaded from [www.abode.eu](http://www.abode.eu)

### Bowl details: (sizes in mm unless specified otherwise)

#### Bowl 1 (typically main bowl):

Bowl 1 size L x W x D (mm): 525 x 390 x 230

Bowl 1 construction: Moulded, 25.00mm

Bowl 1 floor radius (mm): 23

Bowl 1 Wastehole diameter (mm): 90

Bowl 1 overflow: Circular, 30mm diameter

Bowl 1 texture: White glaze

Bowl 1 apx. volume (litres): 32.70

#### Bowl 2 (typically 1/2 or 3/4 bowl):

Bowl 2 size L x W x D (mm): N/A x N/A x N/A

Bowl 2 construction: N/A, N/Amm

Bowl 2 floor radius (mm): N/A

Bowl 2 Wastehole diameter (mm): N/A

Bowl 2 overflow: N/A

Bowl 2 texture: N/A

Bowl 2 apx. volume (litres): N/A

#### Bowl 3:

Bowl 3 size L x W x D (mm): N/A x N/A x N/A

Bowl 3 construction: N/A, N/Amm

Bowl 3 floor radius (mm): N/A

Bowl 3 Wastehole diameter (mm): N/A

Bowl 3 overflow: N/A

Bowl 3 texture: N/A

Bowl 3 apx. volume (litres): N/A

**Important: Please retain this sheet for future use**