

Product Finish: Chrome

Product code: AT1049  
EAN13 barcode: 5060048380484



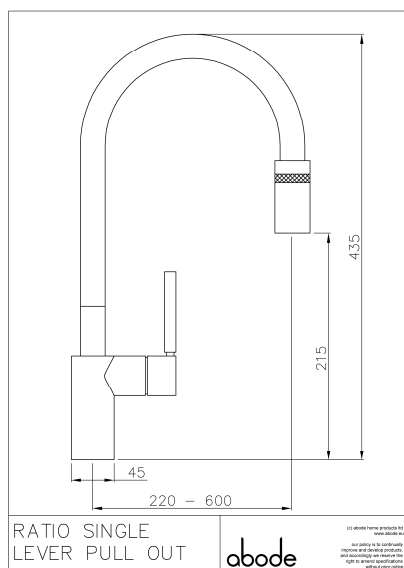
## Product features:

- Metal construction throughout
- Single lever control for effortless single handed control
- Solid and functional European architect design styling
- Extending spout end for ease of use (non spray)
- Antisplash spout supplied as standard

## Additional information / Parts included:

2.5mm a/f Allen key included, dual fixing studs

## Product dimensions:



- **Overall Height / projection:** 435 mm
- **Exit reach:** 220-600 mm
- **Exit height:** 215 mm
- **Centre distance(s):**

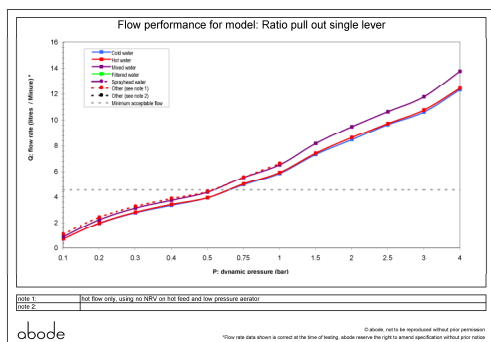
- **Base diameter(s):** 45 mm
- **Recommended hole diameter:** Ø 35 mm
- **Max. surface depth:** 45 mm

- **Spout diameter:** 26 mm
- **Spout aerator size:** 24mm

## Packaged properties:

|                                |                             |
|--------------------------------|-----------------------------|
| <b>Box length:</b> 430mm       | <b>Box depth:</b> 70mm      |
| <b>Box width:</b> 340mm        | <b>Units per outer:</b> 5   |
| <b>Tap only weight:</b> 2.11kg | <b>Boxed weight:</b> 3.39kg |

## Product flow characteristics:



- **Min / Max water pressure:** 0.50 / 5.5 bar
- **Recommended / Max water temperature:** 46°C / 70°C
- **Part G - Mixed flow rate at 3 bar (litres / min):** 11.75

- **Control valve type:** Single lever ceramic cartridge
- **Product flow characteristics:** Single flow
- **Non return valve(s):** Hot & cold (integral to tails)

- **Aerator type:** Metal fine mesh diffuser & flow straightener
- **Accepts revolve / spray areator:** No
- **Spout connection method:** One way snap fit

- **Tail pipe inlet / outlet size:** M10 / 1/2" BSP Male
- **Inlet pipe type / length:** flexible stainless braided hose / 270 mm

## Care instructions summary:

- Clean the mixers and showers regularly as required, using soap, do not use any other cleaners.
- Regular cleaning will prevent the build up of lime scale and dirt.
- After cleaning rinse thoroughly with clean water to remove any cleaner residue
- Residues of sink & worktop cleaners can also cause damage, so rinse with clean water after using, avoid contact with any abrasives

## Warranty Summary (Full details available on request):

- Materials and workmanship defects warranted for 5 years
- Valves and working parts warranted for 5 years
- Surface warranty defects warranted for 1 year
- O-rings, hoses & gaskets warranted for 1 year